

# Low Income Proportionate Share

Draft prepared for Department of Commerce and Economic Opportunity

by Energy Resources Center



November 2015

## EEPS Low Income Mandate

[T]he utility shall: ...

Coordinate with the Department to present a portfolio of measures proportionate to the share of total annual utility revenues in Illinois from households at or below 150% of the poverty level. The energy efficiency programs shall be targeted to households with incomes at or below 80% of area median income.

# American Community Survey – Public Use Microdata Sample

- 2013 – 1% sample – 49673 household records
- Household Records
  - PUMA – Public Use Microdata Area, geographic unit of analysis
  - WGTP – weight for each record for statistical purposes
  - NP – number of persons per household
  - BLD – number of units in structure
  - ELEP – monthly electric costs, notes if electricity included in rent
  - GASP – monthly gas costs, notes if included in rent or in electric bill
  - HFL – heating fuel (gas, electric, propane, wood, etc.)
- Person Records
  - POVPIP – percent of poverty level of household



# Proportionate Share Calculation

1. Download ACS 1% Sample for Illinois, Household and Person Records
2. Select variables and remove zero records (NP=0 or WGTP=0)
3. Merge Households and Person records by SERIALNO
4. Determine utility territory for each PUMA geographic code
5. Obtain residential customers by county from utilities as control totals
6. Calculate percent and number of low income households by territory, adjusted by control totals
7. Calculate relative LI bills vs. general HH bills using ACS
8. Obtain average utility bills by territory from ICC gas and electric annual reports, apply ratio of LI/gen HHs to get average LI bills
9. Calculate total bills paid by LI households
10. Obtain estimated total revenue from utilities (minus self direct)
11. Calculate proportionate share of LI households' revenue by territory

Low Income  
Proportionate  
Share

=

% of LI customers X total resid cust X average LI bill

Estimated total bills paid by all customers

# Comparison of Percent Poverty and Area Median Income by Household Size

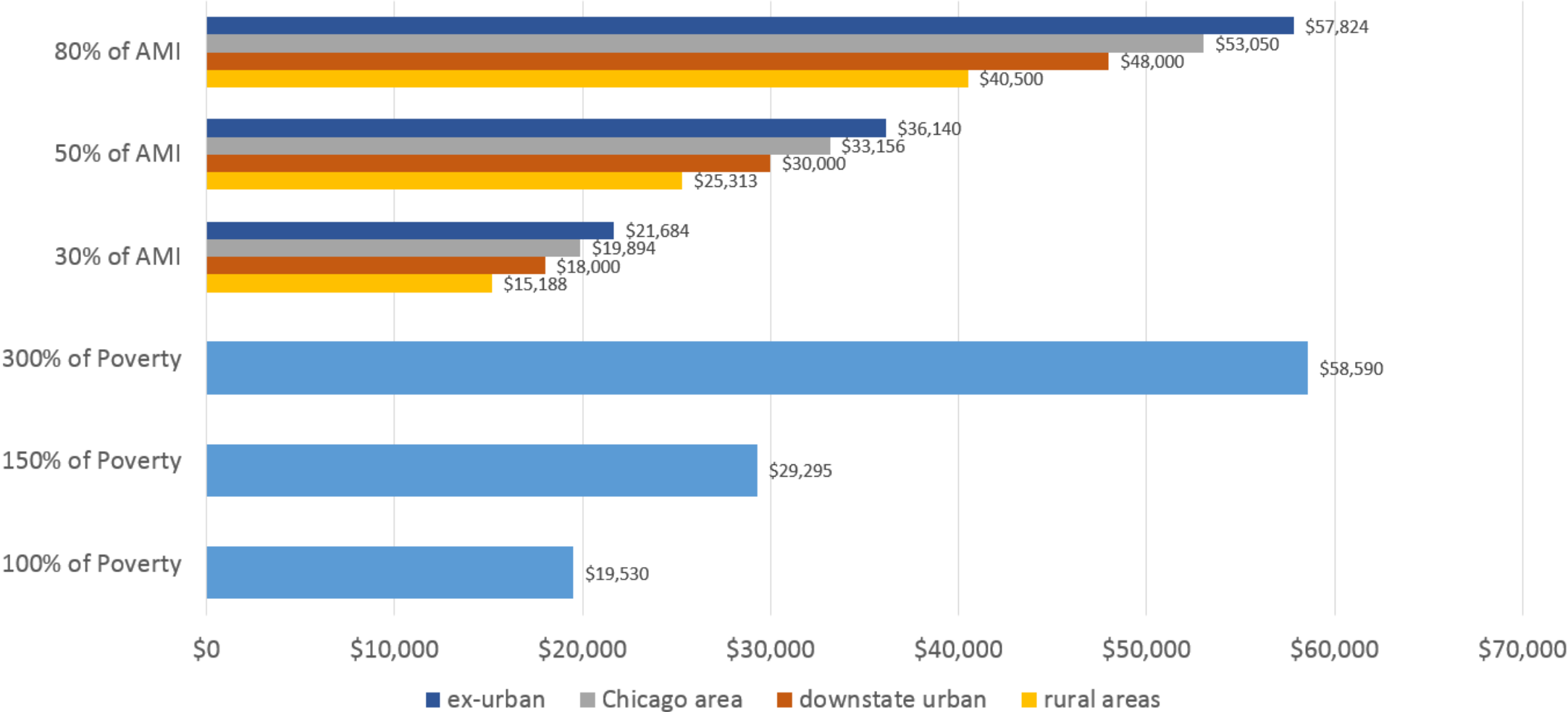
Federal Poverty Level	1	2	3	4	5	6	7	8
100%	11,490	15,510	19,530	23,550	27,570	31,590	35,610	39,630
150%	17,235	23,265	29,295	35,325	41,355	47,385	53,415	59,445
200%	22,980	31,020	39,060	47,100	55,140	63,180	71,220	79,260
300%	34,470	46,530	58,590	70,650	82,710	94,770	106,830	118,890

HUD low income - 80 AMI								
Chicago region	41,250	47,150	53,050	58,900	63,650	68,350	73,050	77,750
Downstate urban	37,350	42,650	48,000	53,300	57,600	61,850	66,100	70,400
Rural	31,500	36,000	40,500	44,950	48,550	52,150	55,750	59,350
Ex-urban	44,968	51,389	57,824	64,209	69,380	74,515	79,650	84,786

HUD very low income - 50 AMI								
Chicago region	25,781	29,469	33,156	36,813	39,781	42,719	45,656	48,594
Downstate urban	23,344	26,656	30,000	33,313	36,000	38,656	41,313	44,000
Rural	19,688	22,500	25,313	28,094	30,344	32,594	34,844	37,094
Ex-urban	28,105	32,118	36,140	40,131	43,362	46,572	49,782	52,991

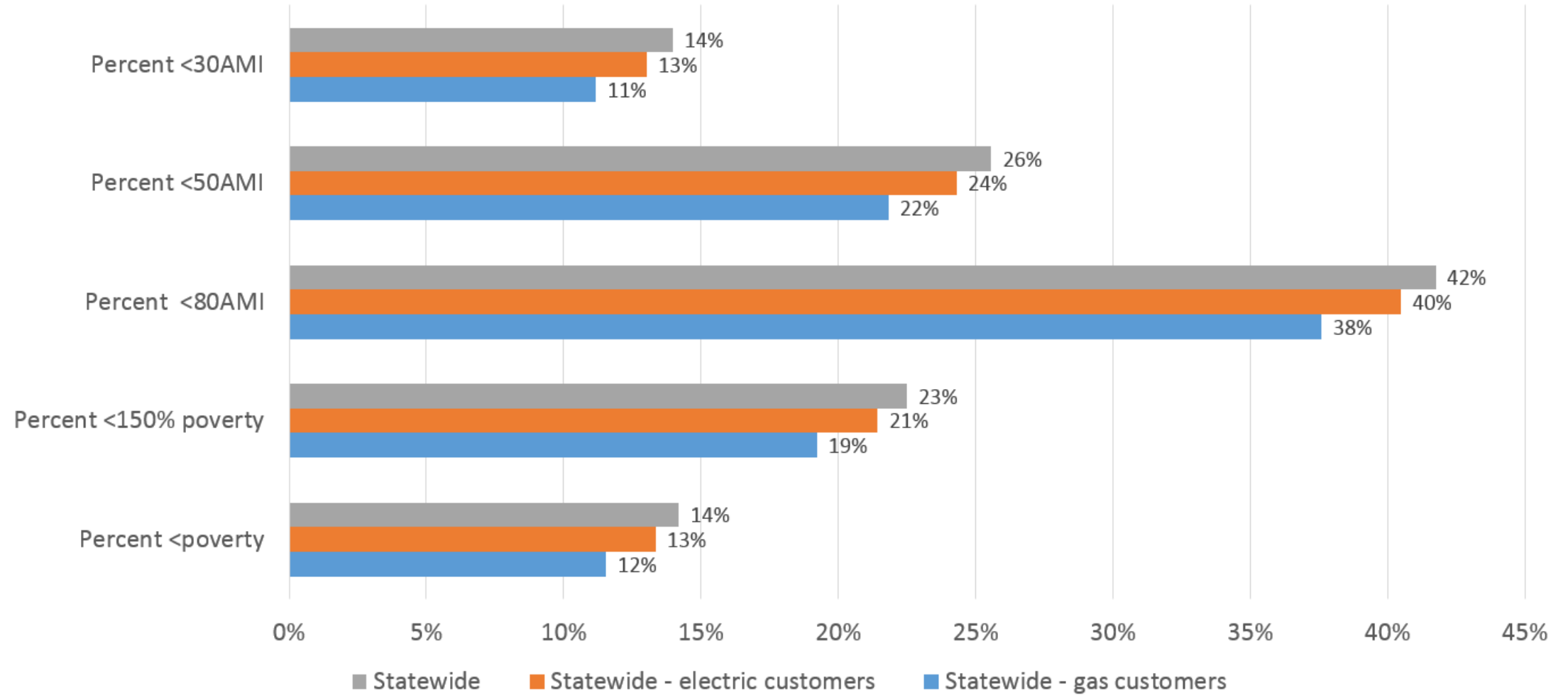
HUD extremely low income - 30 AMI								
Chicago region	15,469	17,681	19,894	22,088	23,869	25,631	27,394	29,156
Downstate urban	14,006	15,994	18,000	19,988	21,600	23,194	24,788	26,400
Rural	11,813	13,500	15,188	16,856	18,206	19,556	20,906	22,256
Ex-urban	16,863	19,271	21,684	24,078	26,017	27,943	29,869	31,795

# Comparison of Low Income Eligibility Criteria (for a three-person household)





# Percent Poverty by Various Definitions

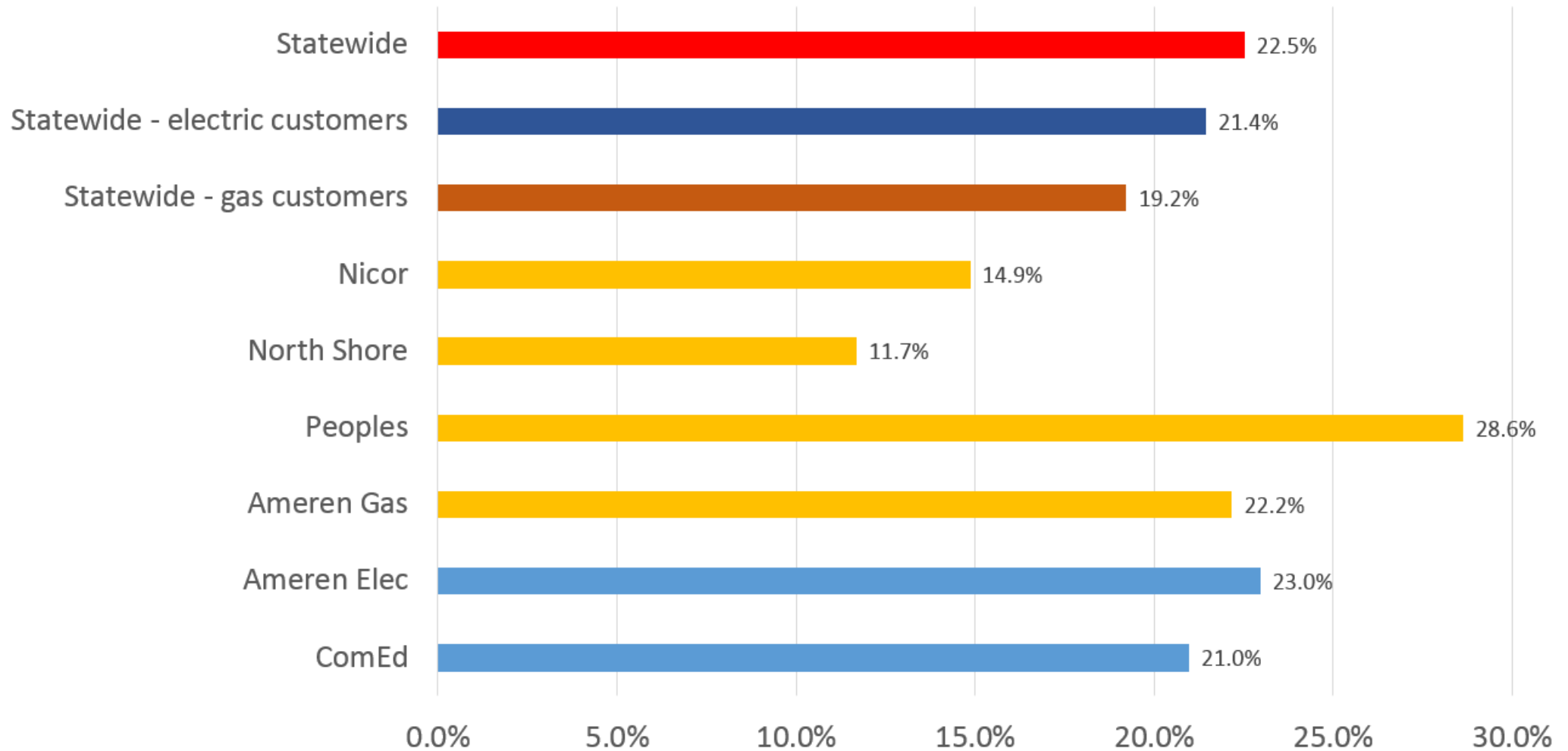


## Number of Households by Poverty Criteria and Utility Territory

Utility	<poverty	<150% poverty	<80AMI	<50AMI	<30AMI	Total Households
ComEd	450,643	727,500	1,392,366	847,145	456,873	3,468,959
Ameren Elec	151,868	243,818	446,183	258,525	134,683	1,061,909
Ameren Gas	98,126	164,745	306,663	172,996	85,492	743,012
Peoples	133,712	212,288	352,689	236,947	132,981	741,370
North Shore	10,190	16,059	38,219	21,330	9,529	137,422
Nicor	150,556	262,997	582,457	313,148	152,768	1,769,903
Statewide - gas	410,276	685,420	1,339,872	777,414	397,206	3,565,389
Statewide - electric	610,164	983,066	1,854,599	1,113,386	595,745	4,583,843
Statewide	677,780	1,076,931	1,995,721	1,223,044	667,946	4,783,425

Note: Excludes heat in rent/master metering, total households from ICC *Comparison of Electric Sales Statistics* and *Comparison of Gas Sales Statistics*

## Percent of Low Income Customers by Utility (<150% Poverty)



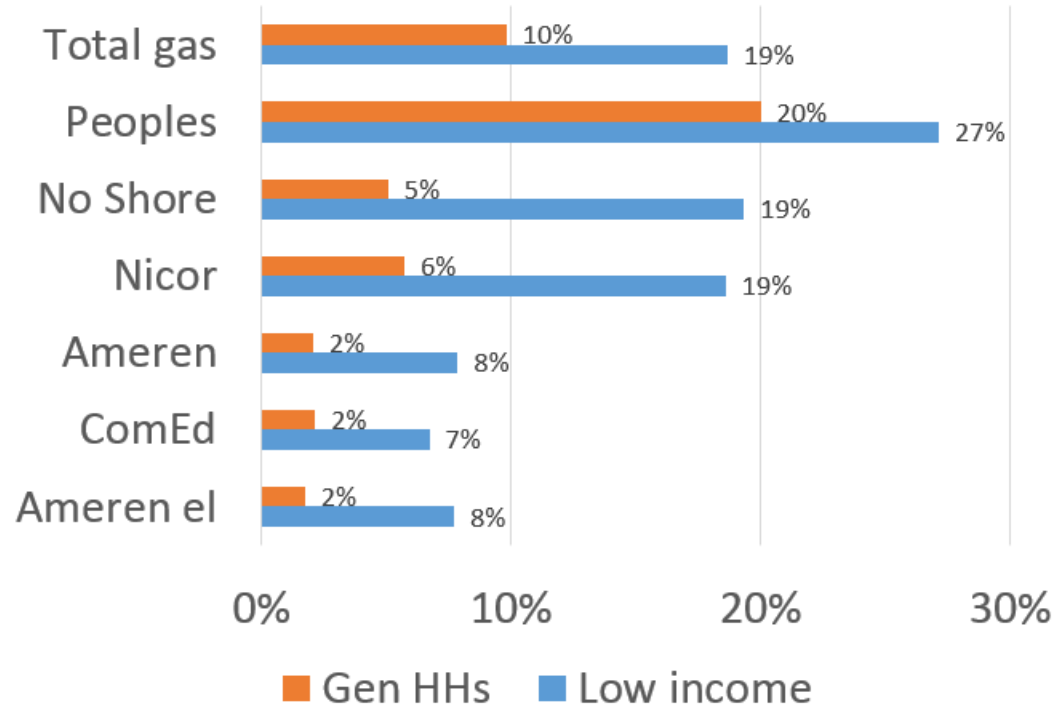
## Percent of Households by Poverty Criteria and Utility Territory

Utility	<poverty	<150% poverty	<80AMI	<50AMI	<30AMI
ComEd	13.0%	21.0%	40.1%	24.4%	13.2%
Ameren Elec	14.3%	23.0%	42.0%	24.3%	12.7%
Ameren Gas	13.2%	22.2%	41.3%	23.3%	11.5%
Peoples	18.0%	28.6%	47.6%	32.0%	17.9%
North Shore	7.4%	11.7%	27.8%	15.5%	6.9%
Nicor	8.5%	14.9%	32.9%	17.7%	8.6%
Statewide - gas customers	11.5%	19.2%	37.6%	21.8%	11.1%
Statewide - electric customers	13.3%	21.4%	40.5%	24.3%	13.0%
Statewide	14.2%	22.5%	41.7%	25.6%	14.0%

Note: Excludes heat in rent/master metering

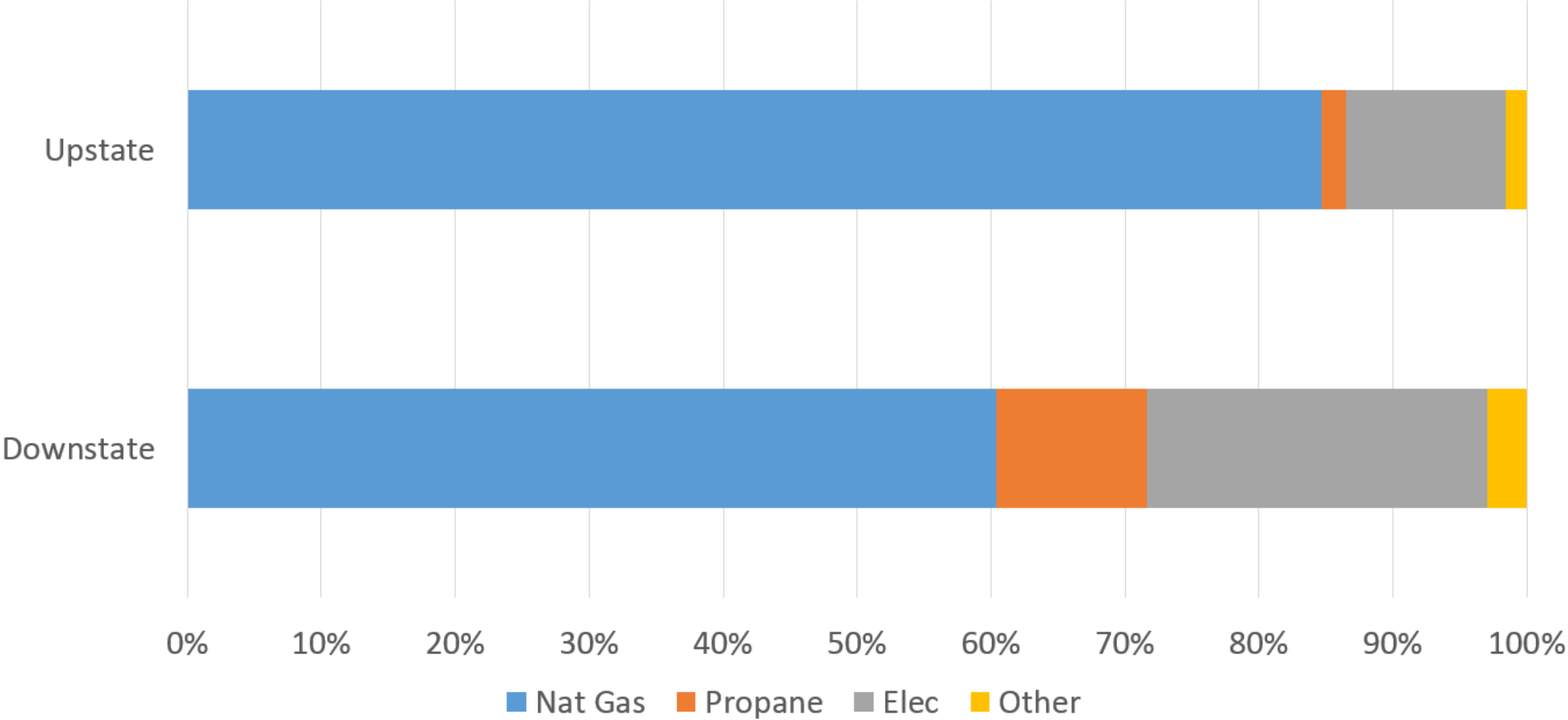
# Households with Utilities in Rent

## Additional Households with Utilities in Rent



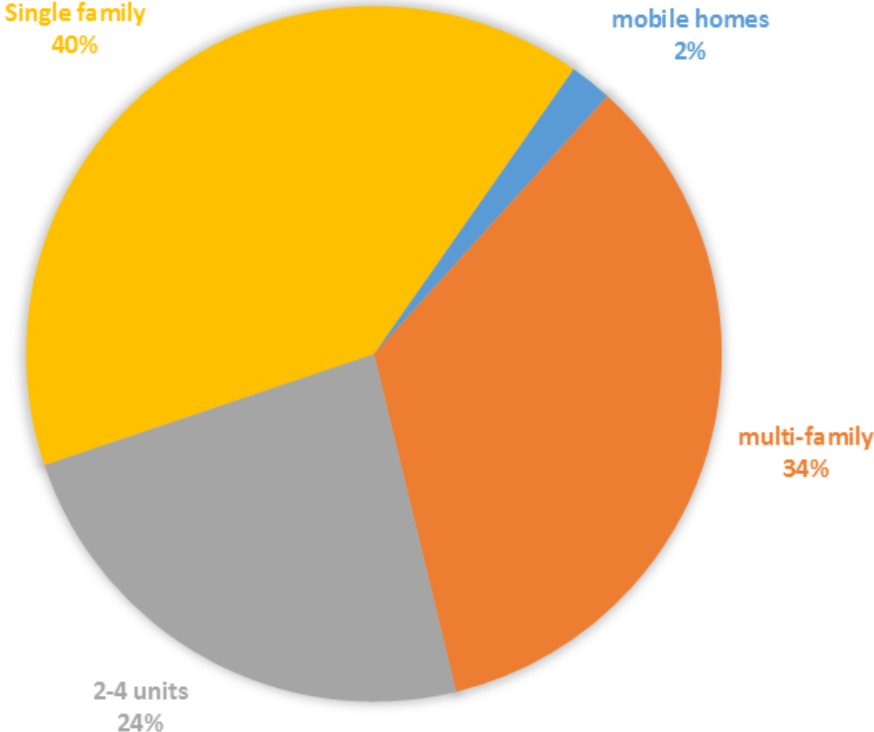
Utility	LI HHs w/ bill	LI HHs in rent	Additional LI HHs
Peoples	212,288	57,589	27%
No Shore	16,059	3,105	19%
Nicor	262,997	48,873	19%
Ameren	164,745	12,945	8%
ComEd	727,500	48,832	7%
Ameren el	243,818	18,792	8%

# Heating Fuel

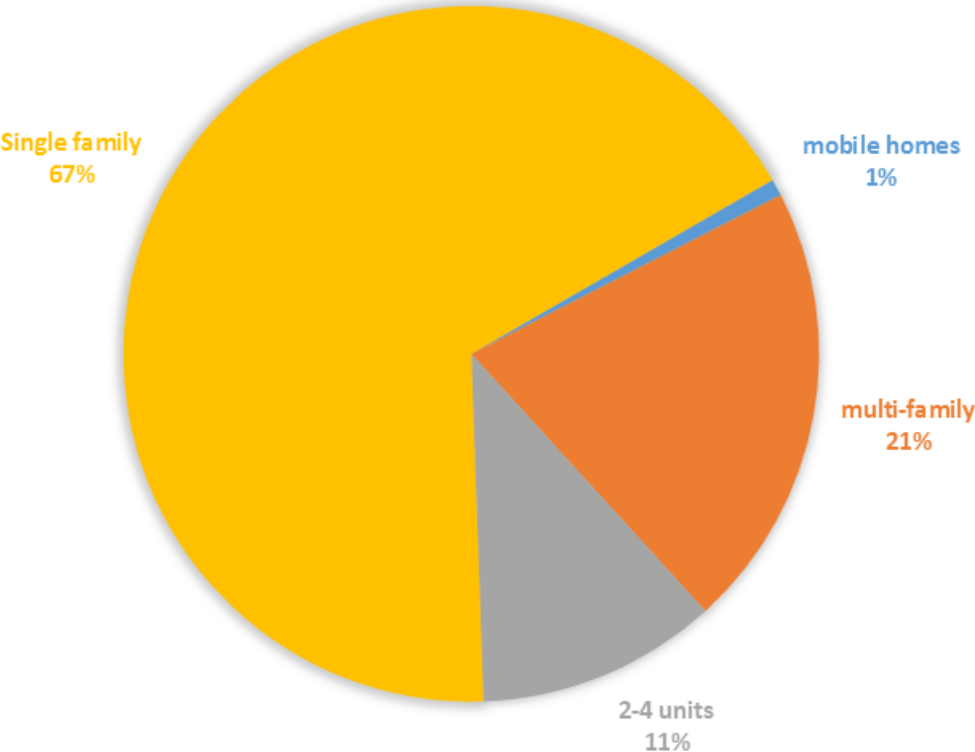


# Comparison of Low Income and General Households by Housing Type - ComEd

## Low Income Households

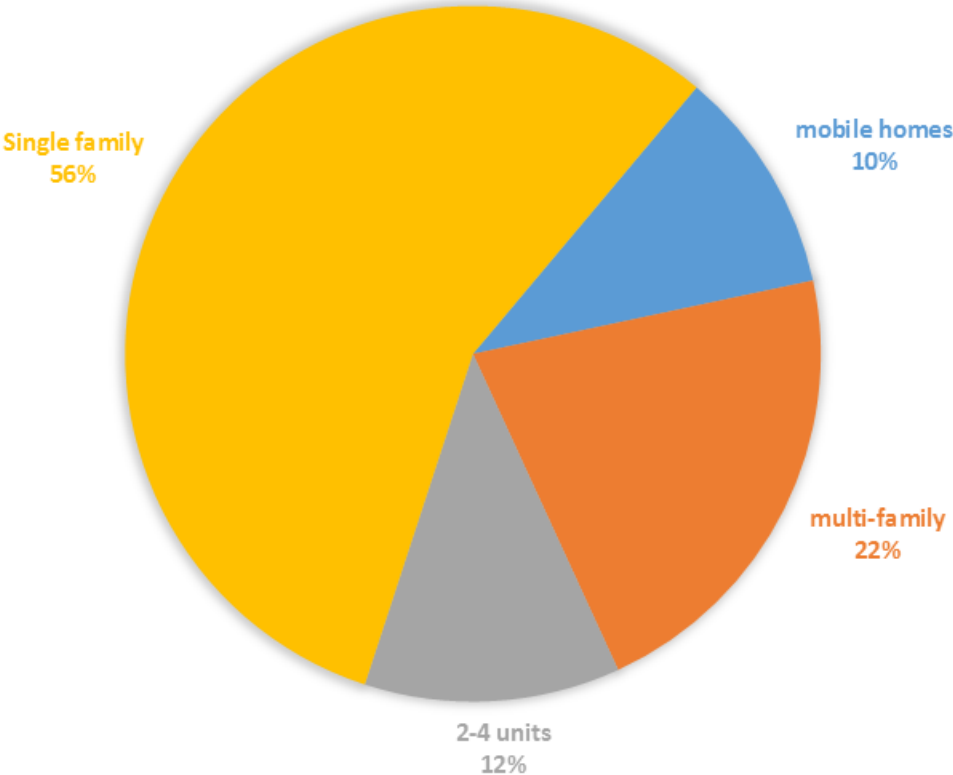


## General Households

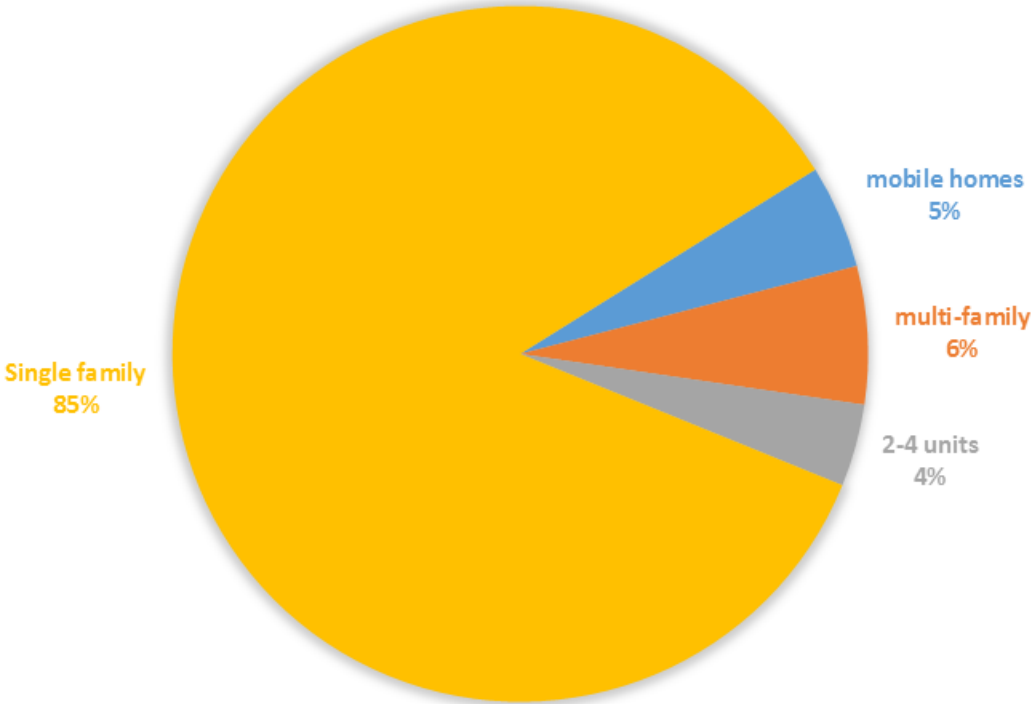


# Comparison of Low Income and General Households by Housing Type - Ameren

## LI Households



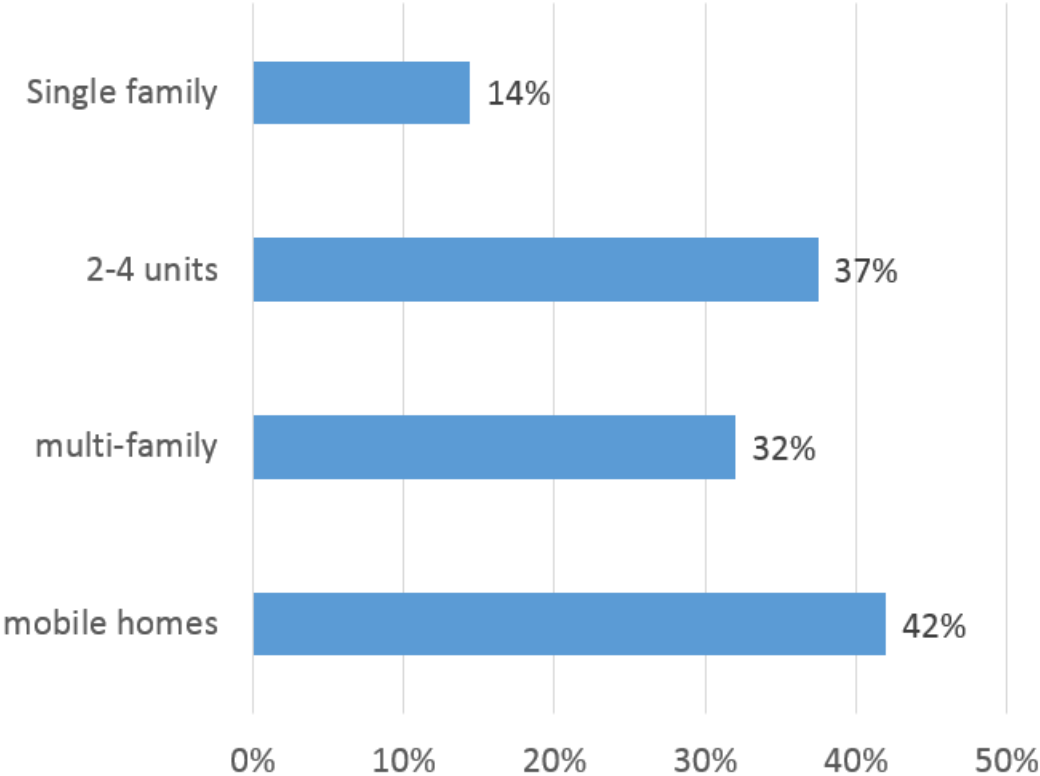
## General Households





# Percent of Each Housing Type that is Low Income

## ComEd



## Ameren

