



comedSM

AN EXELON COMPANY

CY2024

ANNUAL REPORT

Plan 6 Stipulations

Annual Legislative Requirements and Plan 6 Stipulations

As part of the Revised 2022-2025 Energy Efficiency & Demand Response Plan 6 Stipulation Agreement (“RSA”), and in compliance with the Clean Energy Jobs Act (“CEJA”), ComEd provides the following annual updates:

CEJA § 8-103B.g.10 Utilities shall report annually to the Illinois Commerce Commission and the General Assembly with data on vendor and employee diversity to illustrate how hiring, contracting, and job training in energy efficiency programs enhance the diversity of vendors.

2024 Updates

The ComEd Energy Efficiency Program relies on implementation contractors and service providers to help raise awareness of the program; identify and implement energy efficiency improvements; and deliver incentives, discounts, and rebates. ComEd has a series of efforts underway to help enhance the diversity of vendors working on its Energy Efficiency Program:

I. Implementation Contractor Diversity

In 2024, ComEd utilized 31 diverse prime contractors (Tier 1), along with 90 diverse sub-contractors and service providers (Tier 2). The following table (Table 1) shows a breakdown of vendor diversity by diverse category:

Table 1

Diverse Category	# of Vendors	
	Tier 1	Tier 2
MBE	7	42
MWBE	2	0
WBE	20	41
VOSB	2	7
TOTAL	31	90

Data Definitions

- **Tier 1 vendors:** Prime diverse vendor
- **Tier 2 vendors:** Prime non-diverse vendor, subcontracting to a diverse vendor
- **Minority-owned Business Enterprise (MBE):** A for-profit enterprise, regardless of size, physically located in the United States, which is 51% owned, operated, and controlled by minority group members, defined by the following:
 - **Asian-Indian-owned business enterprise:** A U.S. citizen whose origins are from India, Pakistan, or Bangladesh
 - **Asian-Pacific-owned business enterprise:** A U.S. citizen whose origins are from Japan, China, Indonesia, Malaysia, Taiwan, Korea, Vietnam, Laos, Cambodia, the Philippines, Thailand, Samoa, Guam, the U.S. Trust Territories of the Pacific, or the Northern Marianas
 - **African-American-owned business enterprise:** A U.S. citizen having origins in any of the Black racial groups of Africa
 - **Hispanic-owned business enterprise:** A U.S. citizen of Hispanic heritage, from any of the Spanish-speaking areas of the following regions: Mexico, Central America, South America, or the Caribbean Basin

Plan 6 Stipulations

- **Native-American-owned business enterprise:** A person who is an American Indian, Eskimo, Aleut, or Native Hawaiian, and is regarded as such by the community of which the person claims to be a part
- **Woman-owned Business Enterprise (WBE):** An independent business concern that is at least 51% owned and controlled by one or more women who are U.S. citizens or Legal Resident Aliens; whose business formation and principal place of business are in the U.S. or its territories; and whose management and daily operation is controlled by one or more of the women owners
- **Veteran-owned Small Business (VOSB):** A business that is at least 51% owned, operated, and controlled by one or more veterans

II. Implementation Contractor Employee Diversity

ComEd collects information from its implementation contractors regarding the diversity of their workforce and the actions taken to promote Diversity, Equity, and Inclusion (DE&I) in their organization. Information collected includes:

- (i) Whether the implementation contractor has a DE&I plan for their organization
- (ii) Data on the diversity/ethnicity of the implementation contractor’s workforce supporting the ComEd Energy Efficiency Program

This information is self-reported by implementation contractors and aggregated by ComEd to provide statistics across implementation contractors and their employees:

Table 2

Category	Aggregated Totals*
People of Color, Female	116.4
People of Color, Male	103.6
White, Female	202.8
White, Male	192.7
Undisclosed	54.5
Total	670

*Employee statistics reflect an aggregated total as self-reported by the implementation contractors supporting ComEd EE programs. These numbers include both fully and partially dedicated employees supporting the delivery of the ComEd EE portfolio.

III. Workforce Equity and Quality Jobs

In addition, the ComEd Energy Efficiency program promotes workforce equity and quality jobs through additional efforts, including but not limited to the following:

- **Energy Efficiency Service Provider (EESP) Incubator:** Launched in 2020, the EESP Incubator is delivered in collaboration with a women-owned implementation contractor. The EESP Incubator is designed to educate and train service providers (which includes contractors, distributors, and engineers), many located within our underserved communities, on ComEd’s Energy Efficiency Program. Participating businesses are educated on

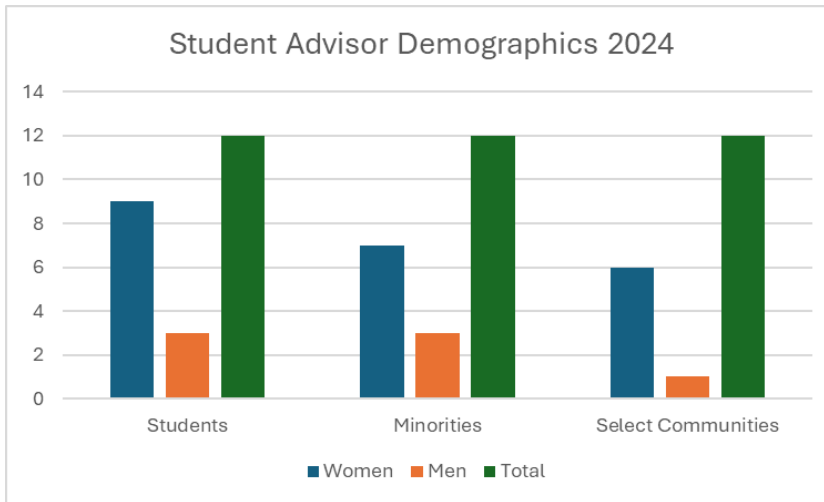
Plan 6 Stipulations

how to best represent the ComEd Energy Efficiency Program to customers and complete energy efficiency projects by leveraging existing workforce development frameworks, community-based agency partnerships, and support from ComEd's Energy Efficiency Program prime implementation contractors. From its inception through 2024, 142 members have completed Incubator training, and 102 have been accepted into the ComEd EESP Network.

- **Market Development Initiative (MDI):** The aim of the MDI is to increase ComEd Energy Efficiency contracting opportunities for diverse business enterprises and community-based organizations (CBOs) and improve the diversity and inclusiveness of the ComEd Energy Efficiency supplier workforce. In 2024, the program graduated 71 individuals from the Newcomer and Skilled Cohorts, supporting their achievement of Building Performance Institute certifications. All Newcomer graduates were successfully placed in on-the-job training opportunities. MDI engaged 45 community-based organizations to expand outreach and deepen local partnerships. The initiative strengthened its pipeline of diverse Energy Efficiency Service Providers (EESPs) through tailored support in certification, branding, and business development. Targeted marketing campaigns and high-impact events boosted visibility and participation across underserved communities. Strategic collaborations with organizations like Builders Avenue and Allies for Community Business helped scale wraparound services and technical assistance, advancing MDI's mission to build a more inclusive, community-rooted energy efficiency ecosystem.
 - ComEd engaged implementation contractors (ICs) and Energy Efficiency Service Providers (EESPs) to invite their support of the MDI initiative in 2024. For example, an EESP that supports multiple ComEd EE offerings hosted MDI program graduates for two weeks of on-the-job training—often leading to employment in the industry. This EESP has since directly hired multiple MDI program graduates who participated in on-the-job training.
- **Strategic Energy Management (SEM) Student Intern Advisors:** Launched in 2021, this program was established to engage and make students aware of career paths in energy efficiency, understand the relevance of energy management across industries and job functions, and learn transferable work skills. The program engages ComEd's broader workforce development programming and aims to reach diverse students from Select Communities, and makes diversity, equity, and inclusion a central component of recruiting and participation. Recruitment into the program includes student groups from Select Communities, students from our participating SEM customers, and local colleges and universities. The program seeks to attract students with diverse educational focus and an interest in energy efficiency. In 2024, the SEM program provided part-time, paid positions to 12 students (see *Chart 1* for demographic breakdown).
 - 75% women
 - 83% minorities
 - 58% represent Select Communities

Plan 6 Stipulations

Chart 1



- **Energy Force Ambassadors Program:** The Energy Force Ambassador Program is a Corporate Community Impact and Marketing initiative designed to offer job training and work experience for adults with developmental disabilities in a public-facing role. Founded in 2012, the Energy Force Program is now in its 13th year and boasts 30 Energy Force Ambassadors representing various esteemed organizations from Northern Illinois and Chicagoland that serve people with disabilities. Each year, the ComEd Energy Force Ambassadors successfully interact with more than 50,000 customers, spreading awareness toward energy efficiency and driving positive change in our communities. Participating organizations receive \$8,000 to cover any costs associated with the program and compensate individual Ambassadors for their work.
- **IHWAP Training Fund:** In 2024, ComEd's Home Energy Savings (HES) offering allocated \$45,000 to the Illinois Department of Commerce and Economic Opportunity to support QAQC monitoring and technical training for Community Action Agency (CAA) staff and contractors involved in delivering the Illinois Home Weatherization Assistance Program (IHWAP). IHWAP aims to deliver weatherization and other energy efficiency upgrades to income-eligible customers throughout the state of Illinois. In 2024, ComEd's funding helped to support 28 building science focused courses ranging in topics from weatherization basics to health and safety and indoor pollutants.
- **Home Energy Savings' Community Partner Program:** In 2024, the Home Energy Savings (HES) offering continued efforts that began in 2022 to develop partnerships with a variety of community based organizations (CBOs), including Community Action Agencies and other nonprofit organizations who have trusted relationships in communities throughout ComEd's service territory. HES collaborated with a total of 46 program partners, including eight Outreach/Enrollment Partners and 38 Awareness Partners. The partners help to get the word out about this energy efficiency offering to diverse communities. Through these partnerships, the HES program was promoted at over 200 outreach events and over 2,500 income eligible customers received free energy efficiency services by enrolling in HES through a partner.

Plan 6 Stipulations

RSA § V (D-1c) Measure Data/Comprehensiveness of Treatment – ComEd commits to providing the following in its ICC-filed Annual Reports:

- % of buildings that received different types of EE services:
 - Whole building assessments
 - Only DI measures
 - In-unit
 - One (1) or more major measures listed by type (e.g., building envelope measures – air sealing and insulation, HVAC equipment, and water heating equipment).

2024 Updates

The following table (*Table 3*) provides a breakdown of participation in services provided by the Multi-Family Assessment program. In 2024, the program served 3,070 buildings.

Table 3

	Quantity	% of Total Buildings Served	Additional Commentary
• Buildings that received a whole building assessment	356	12%	Multi-Family Assessments completed in 2024
• Buildings that received <i>only</i> DI measures (no additional measures)	327	11%	
• Buildings that received in-unit (tenant) upgrades	511	17%	
• Buildings that received one or more:			
○ Air Sealing	185	6%	
○ Insulation	798	26%	
○ Water Heating Equipment	190	6%	Includes water heaters, boilers, domestic hot water (DHW) pumps, boiler tune ups, steam traps, and a custom bathroom aerator.
○ Refrigerator replacements	46	1%	
○ Capital HVAC	123	4%	Includes heat pumps, furnaces, custom HVAC, and exhaust damper

Plan 6 Stipulations

RSA § V (D-2) Equity-Affordability Reporting Metrics

- a) ComEd commits to report on the following in its ICC-filed Annual Reports:
 - o Program participation, by zip code, with average income information

2024 Updates

The following table (*Table 4*) provides a list of all zip codes with customer participation in EE programs with average income information for each zip code.

Table 4

Zip Code	Average Household Income	Contract or / Midstream Rebates	Assessments	Incentives	Targeted Systems	Midstream / Upstream	Multifamily Upgrades	Product Distribution	New Construction - IE	Retail / Online	Single-Family Upgrades	Small Businesses	Behavior Bus / Pub	New Construction - Bus / Pub	Total EE Participants
60002	\$104,958	10		1	3	12	19	117		213	102	15			492
60004	\$125,586	14		7	1	33	140	1,667	1	1,626	253	35	2		3,779
60005	\$112,606	3		8	3	31	22	879		950	94	37	1		2,028
60007	\$99,556	5		33	17	116		153		411	119	83	3		940
60008	\$101,440	4		6	3	27	74	1,488		211	148	10			1,971
60010	\$193,630	34		12	4	33		3,086		567	266	21			4,023
60012	\$130,053	4		2	3	6				110	43	8			176
60013	\$130,596	3		2	6	15		452		224	175	18	1		896
60014	\$114,891	12		16	4	53		3,291		901	225	47	5		4,554
60015	\$203,805	15		6	3	41		473		479	142	20	1		1,180
60016	\$87,042	4		7	1	34		3,863		1,016	260	18			5,203
60018	\$84,332	2		10	2	95	8	56		867	127	30	5		1,202
60020	\$79,636	3		4		2		75		244	158	8	1		495
60021	\$126,291	4		4		3				45	38	2			96
60022	\$265,995	11				7		4		111	20	1			154
60025	\$152,600	19		6	3	41		263		614	174	19			1,139
60026	\$187,158	3		5	1	24		64		192	57	5			351
60029	Not Available	1				1				5					7
60030	\$117,389	11		12	2	38	50	2,119		406	171	16			2,825
60031	\$120,903	3		10	4	50	20	775		492	325	35	6		1,720
60033	\$69,998	3		1	3	10		627		101	46	22			813
60034	\$78,679	2				2		72		11	25	3			115
60035	\$206,961	22		5	3	30	10	784		443	276	20	2		1,595
60040	\$112,631	3				3		1,309		39	50	2			1,406
60041	\$89,730	3				4		176		73	30	2			288
60042	\$91,393	1		2				27		71	93	1			195
60043	Not Available	1						1		32	6				40
60044	\$181,230	3		3		13		20		105	48	16			208
60045	\$260,670	21		7	4	45		1,042		307	70	5			1,501
60046	\$114,130	4		6	2	10	80	590		1,005	153	11			1,861
60047	\$191,537	29		12	7	43		267		1,123	140	25			1,646
60048	\$199,563	13		12	3	54		2,806		991	133	35	2		4,049

Plan 6 Stipulations

60050	\$87,382	2	7	4	25	38	2,386	1	623	195	22		3,303
60051	\$100,114	2	2	1	21		1,480		774	105	17	1	2,403
60053	\$102,831	1	4	2	22		43		421	230	13		736
60056	\$103,149	2	10	4	31		342		649	230	21	1	1,290
60060	\$129,151	6	6	4	41		315		944	185	30	2	1,534
60061	\$161,469	2	15	1	38	216	305		352	175	19	1	1,123
60062	\$163,116	22	8	6	97		51		1,676	198	36	1	2,095
60064	\$62,601		8	2	20	6	8,962		89	78	20		9,185
60067	\$138,703	17	8	6	40	60	2,271		1,525	185	34	1	4,147
60068	\$147,112	15	4	1	18		1,807		478	109	10		2,442
60069	\$187,083	12	5	3	26		8		113	42	8		217
60070	\$97,687	3	1		2	300	21		147	56	2		532
60071	\$105,270	2			4				37	33	5		81
60072	\$128,165				4				9		4		17
60073	\$90,690	4	2	1	25		5,350		546	285	16		6,229
60074	\$98,017	7	2		15	21	1,312		276	128	14	1	1,776
60075	Not Available										11		11
60076	\$113,703	7	6	1	29	9	543		333	291	17		1,236
60077	\$89,852	7	5	3	36	42	18,483		264	189	13		19,042
60081	\$109,813	1	1		12		1,281		87	46	14		1,442
60083	\$119,207	3	1	1	6		81		88	44	2		226
60084	\$117,770	10	1	2	17		192		197	37	25		481
60085	\$61,526		12	10	73		22,595		1,957	231	55	2	24,935
60087	\$76,470	1	2	1	12		275		240	130	14		675
60088	Not Available				8		137						145
60089	\$147,193	10	19	4	36		247		594	328	27	4	1,270
60090	\$96,272	4	11	18	60	12	356		333	130	35	7	967
60091	\$219,693	16	3	1	15		15		349	167	19	1	586
60093	\$242,723	8			20		106		93	49	7	1	284
60096	\$105,480				1		619		26	52	6		704
60097	\$86,748	3			1		41		109	71			225
60098	\$85,722	10	12	8	31	334	91		465	130	17		1,098
60099	\$71,568	1	2	1	18		1,472		363	196	30		2,083
60101	\$84,270	4	18	18	58	12	3,421		1,248	158	76	1	5,014
60102	\$124,920	8	7		23		68		727	129	14	3	979
60103	\$128,188	2	9	2	27		126		894	258	13	7	1,338
60104	\$71,688		8	2	9	89	486		137	799	15	3	1,548
60106	\$86,273	4	13	7	43		569		157	117	33	1	944
60107	\$100,194	6	8	1	16		192		369	231	15	7	845
60108	\$112,313	7	16	4	25		9		906	100	8		1,075
60109	Not Available				1				4	5			10
60110	\$93,327	3	8	1	8		5,403		822	153	15	3	6,416
60111	\$116,411								7				7
60112	\$91,222		1	2					39	11			53
60115	\$66,976	6	11	6	23	472	2,539		1,015	175	21	7	4,275
60118	\$121,434	12	4		11				210	64	9		310
60119	\$145,873	1			12		48		85	61	4		211
60120	\$87,060	5	9	1	33		749		452	164	24	10	1,447
60123	\$83,361	15	21	21	69	21	8,601		584	285	68	14	9,699

Plan 6 Stipulations

60124	\$139,073	19	9	2	21	30	222	218	26	2	1	550	
60126	\$151,424	38	13	3	45	2,338	952	121	37	1	1	3,549	
60129	\$104,142	2	1				2					5	
60130	\$79,847	3	3	1	9	21	5,457	63	101	7	1	5,665	
60131	\$80,026	1	14	12	31	1,773	927	139	25	1		2,923	
60132	Not Available	1										1	
60133	\$95,950	1	7	4	20	4,892	216	314	11	6		5,471	
60134	\$147,711				3	26,477	64	44	1			26,589	
60135	\$97,787	2		4	6	720	57	60	3			852	
60136	\$125,899		1		11		70	25	3			110	
60137	\$148,500	17	7	5	21	180	1,364	362	121	9		2,086	
60139	\$80,117	2	14	5	39	151	1,372	809	193	26		2,611	
60140	\$103,564	4	3	4	15		169	184	157	11		547	
60141	Not Available				1		1,944					1,945	
60142	\$99,243	4	5	3	26	361	710	200	12	1		1,322	
60143	\$115,079	3	12	7	43	506	85	43	22	2		723	
60145	\$97,153	2				1	18	17				38	
60146	\$85,356	2			1	145	17	20	0			185	
60147	Not Available						1					1	
60148	\$101,589	11	14	1	44	3,746	968	309	52			5,145	
60150	\$92,666		1		2		6	17				26	
60151	\$101,623	7	2		2		32	10	1			54	
60152	\$91,879	4	1	3	8	2,258	110	61	7			2,452	
60153	\$61,962		2	1	8	4	2,533	1	177	507	5	1	3,240
60154	\$100,871	4	3		18		3,465	617	239	8			4,354
60155	\$68,857		4	8	18		773	1	129	217	16		1,166
60156	\$114,670	5	2	1	10		1	211	138	17	3		388
60157	\$99,904	1			2			28	5				36
60160	\$68,268		7	8	38	6	4,609	1,025	175	28	2		5,898
60162	\$78,732		6	4	13		1,815	134	252	10		1	2,235
60163	\$108,031				7		51	104	77	3			242
60164	\$78,585	1	7	4	19		214	197	182	7			631
60165	\$63,724				3		28	25	18	3			77
60168	Not Available								4				4
60169	\$97,918	2	7	1	17	2,728	137	160	16				3,068
60171	\$71,047		2		11	12	114	94	25	2			260
60172	\$104,720	5	7	4	17		152	236	166	25			612
60173	\$105,928	2	21	5	64		1,129	168	84	22			1,495
60174	\$138,829						1	618	74				693
60175	\$183,115	1			2			176	135	2			316
60176	\$75,724	2	6		20	60	34	91	184	19			416
60177	\$126,185	5	8	4	17	34	145	812	161	12	5	1	1,204
60178	\$101,817	1	3	4	20		1,264	192	142	19			1,645
60180	\$111,488		1		1			7	12	2			23
60181	\$96,299	5	4	3	30		1,308	307	287	39			1,983
60184	\$202,783	2			1		1,248	13	17		1		1,282
60185	\$111,736	7	8	8	42		2,095	1	486	128	39	3	2,817
60187	\$138,612	16	6	1	27	112	1,853	304	107	25			2,451
60188	\$104,807	5	17	16	58	125	3,232	841	142	39	3		4,478

Plan 6 Stipulations

60436	\$71,017		11	1	34		52,311	1	179	174	22	1	52,734
60437	\$71,849						1		3				4
60438	\$71,259		5		16	26	1,832	1	1,564	1,019	13	1	4,477
60439	\$139,405	8	5	2	22		16		779	185	7		1,024
60440	\$93,591	1	25	6	42		2,966		321	494	37	2	3,894
60441	\$104,038	3	18	3	18		2,920		364	332	21	1	3,680
60442	\$113,884				1		773		105	83	8		970
60443	\$94,557		7	1	10		4,098		181	900	9		5,206
60444	\$81,743		1						17	4	4		26
60445	\$80,725		2		11		109		340	128	14		604
60446	\$90,455		21	3	43		3,831		857	405	22		5,182
60447	\$104,065	2	5	1	11		121		136	95	6		377
60448	\$130,655	8	6	3	11		603		246	214	28	1	1,120
60449	\$106,551		5		4		3,339		65	104	5		3,522
60450	\$87,558	6	6		17		122		865	217	21	1	1,255
60451	\$132,095	3	5	2	22		1,615		829	309	40	1	2,826
60452	\$97,931	3	10	1	7	7	621		161	579	11		1,400
60453	\$82,689	8	8		29	14	371		957	754	17		2,158
60455	\$75,175		7	4	23	24	2,025		133	144	22		2,382
60456	\$64,526			1			93		55	86	1		236
60457	\$81,733	1	1		6	9	72		169	138	12		408
60458	\$69,149		1		3	12	109		85	77	1		288
60459	\$74,154	1	3	3	6		368		615	274	12		1,282
60460	\$75,051								5				5
60461	\$125,465	1	1		5		291		13	296	5		612
60462	\$119,232	8	12	2	33		1,213		1,370	379	33		3,050
60463	\$118,871	4	4		15		836		99	112	11		1,081
60464	\$126,809	2	1		6		18		87	55	1		170
60465	\$83,463	1	1		7		352		206	88	6		661
60466	\$68,607		6	1	2	324	4,309		311	915	5		5,873
60467	\$131,811	1	3	1	16		1,873		264	239	5	1	2,403
60468	\$97,820	1	1	1	2		98		45	71	7		226
60469	\$52,570		3		5		2,929		48	200	3		3,188
60470	\$75,997						1		2		1		4
60471	\$73,373			1	6	64	4,214		166	456	1		4,908
60472	\$47,802		1	1	3		260		34	244	3		546
60473	\$79,429		6	1	23		1,047		688	1,542	36		3,343
60474	Not Available						125		9	25			159
60475	\$66,361				1	672	934		74	107	2		1,790
60476	\$66,753		3				11		24	81	5		124
60477	\$92,965	5	13	4	16		2,021		450	379	30		2,918
60478	\$72,062	1	4		4		659		103	886	4		1,661
60479	\$79,685								4	5	4		13
60480	\$137,503	1	1		2		13		52	26	2		97
60481	\$83,449		4		5		1,308		77	52	6	1	1,453
60482	\$68,025	1	1		3	8	1,034		168	60	1		1,277
60483	Not Available									4			4
60484	\$64,327		4	3	10		1,579		15	260	10	1	1,882
60485	Not Available						1						1

Plan 6 Stipulations

60645	\$82,324	10	1		10	25	563		513	245	13		1,380
60646	\$130,916	16	1	1	28		390		493	169	16		1,114
60647	\$102,946	12	6		38	8	6,572		613	297	22		7,567
60649	\$47,479		3	1	25	29	9,778		314	551	7		10,709
60651	\$54,759		6	6	36	4	14,706		509	720	16		16,003
60652	\$84,210	1	2		18	59	1,965		295	1,679	10	1	4,031
60653	\$55,697	2	2		17	8	11,462	1	217	350	9		12,068
60654	\$168,408	1	7	1	62		1,525	1	128	34	5		1,764
60655	\$114,520	3	5		14		239		287	802	8		1,358
60656	\$87,724	2	6		6		385		330	221	5		955
60657	\$140,164	17	3		29	3	404		404	38	11		909
60659	\$80,825	1	3		13	5	2,138		837	248	13		3,258
60660	\$74,022	7		1	17	25	390		546	99	2		1,086
60661	\$158,522		3	1	42		11		63		2		122
60666	Not Available		1		21						3		25
60680	Not Available								1				1
60701	Not Available								5				5
60706	\$83,372	2	8	2	19		1,549		193	232	8		2,013
60707	\$84,122	2	2		8	4	1,582		497	394	13		2,502
60712	\$131,079	5	1	3	8		41		133	146	8		345
60714	\$89,202	1	6	8	40		1,418		372	234	30		2,109
60803	\$74,472	3	11	9	35	12	2,919		338	270	37		3,634
60804	\$62,476	1	10	9	28		9,912		2,344	531	29	2	12,866
60805	\$99,253	5	3	1	15		1,001		111	528	2		1,666
60827	\$47,921		2	6	10		5,762		198	1,082	9		7,069
60901	\$64,848		9	5	78	107	7,031		350	434	20	2	8,035
60910	\$63,850								7				7
60913	\$93,774				1				13	3			17
60914	\$92,772	1	8	1	20		100		824	182	5		1,141
60915	\$66,023		3	1	19		328		596	88	0	1	1,036
60917	\$77,046				1				1				2
60919	\$74,975						1		5	7			13
60920	Not Available								1				1
60922	\$74,266				2		1		3	6			12
60929	Not Available								1				1
60934	\$81,725								1				1
60935	\$104,668								6	1			7
60940	\$87,824		2		2				18		3		25
60941	\$83,661				2		336		13				351
60944	Not Available								1				1
60946	\$77,503	1							2				3
60950	\$85,367		3	3	13		1,044		99	54	3	1	1,220
60954	\$80,487		4		11		265		25	54	1	2	362
60958	\$47,738								1	5	1		7
60961	\$89,388				1				5				6
60964	\$72,302				3		30		39	10	1		83
60969	Not Available								1		1		2
60970	Not Available									2			2
61001	\$79,859		1				2		3	18			24

Plan 6 Stipulations

61006	\$72,177		1	1	2		9		10	20	2	1	46
61007	Not Available	1	2				1		8				12
61008	\$76,878	5	11	8	25	24	1,547		584	117	29	13	2,363
61010	\$97,468	4	1		3	5	11		75	17	1		117
61011	\$121,403	3	1		1		3		25	11	1	2	47
61012	\$77,389			1	1		1,279		15	2		1	1,299
61013	Not Available						3		8		2		13
61014	\$74,830								1	8			9
61015	\$92,183								7	9			16
61016	\$90,206	4	1		4		12	1	53	20	2		97
61018	\$68,361		6	1	3		1		9			1	21
61019	\$75,566		7	1	1		463		29	5			506
61020	\$82,812	1					6		33	15			55
61021	\$77,187	1	6	3	25		2,806		192	170	9		3,212
61024	\$77,568		3				70		23	24	3		123
61027	Not Available								1				1
61030	\$69,236	1		1	1	30	103		32	11	3		182
61031	\$76,899		1	1	1		12		12	4	1	1	33
61032	\$57,657	11	14	4	27		584		620	293	14		1,567
61036	Not Available						96						96
61037	Not Available						1						1
61038	\$99,676						8		10	14			32
61039	\$66,296						48		5	6	1		60
61042	\$74,491								2				2
61043	\$88,527						1						1
61044	\$71,147								2				2
61046	\$68,886	2		1			3		40	12	5		63
61047	\$76,168						6		15	6			27
61048	\$74,570	2			6		18		40	21			87
61049	\$82,481								5	6			11
61050	\$79,150						1		5	7			13
61051	\$64,680	1			1		4		11	6	1		24
61052	\$81,622						117		9	9			135
61053	\$68,421								1				1
61054	\$67,211	1			2		356		32	22	1		414
61057	Not Available								1		1		2
61059	\$61,500						2		2				4
61060	\$69,498		5	1			3		7	9			25
61061	\$76,459		2		8	46	114		46	47	4		267
61062	\$83,841	1			2		4		14	4	1		26
61063	\$83,975	1	2	2	6		256		39	6			312
61064	\$68,843					6	287		39	7	2		340
61065	\$94,673	5			3		84		102	74			268
61067	\$69,365	1							2	5			8
61068	\$68,628						951		53	7			1,011
61070	\$73,410		2				1		4	7			14
61071	\$61,924			2	1		376		32	12			423
61072	\$91,060						6,363		60	1			6,424
61073	\$106,256	10		2	7		748		137	95	7		1,006

Plan 6 Stipulations

61074	Not Available					68								68
61075	\$80,100								3					3
61077	Not Available		1						2					3
61078	\$67,436	1				3			9	9				22
61079	Not Available					1								1
61080	\$81,211			2		74			1					77
61081	\$71,339	1	6	3	8	5,692			721	128	15	2		6,576
61084	\$87,616	2				172			21	21	1			217
61085	\$60,833	4	2			9			33	18				66
61087	\$66,656	1		1		15			11		1			29
61088	\$94,174		2		4	40	8		36	39	1			130
61089	\$66,788		1		2	5			10					18
61091	Not Available								1					1
61101	\$45,784		8	3	12	28	4,820	1	355	243	7	3	1	5,481
61102	\$55,267	2	3	7	9	4	2,481		130	156	8	2		2,802
61103	\$54,851	3	2	10	23	4	390		307	214	8	2		963
61104	\$39,496		7	11	23	11	1,600		363	138	22	2		2,178
61107	\$80,276	15	14	2	18	6	2,547		337	300	15	7		3,260
61108	\$66,328	8	8	1	26	4	334		995	259	19	2		1,656
61109	\$57,333	2	7	22	42	5	8,039		305	202	51	2		8,677
61111	\$73,543	4	10	10	26	11	870		853	173	26	8		1,991
61112	Not Available								274					274
61114	\$92,477	5	4	3	7		186		681	150	6			1,042
61115	\$69,331	4	5	9	10	6	996		777	69	13			1,889
61125	Not Available				1						1			2
61230	\$76,824					1			1					2
61243	\$80,111								1					1
61250	\$80,464			1		77			14		5			97
61251	\$84,881								3	4				7
61252	\$70,471			2	2	452			57	42				555
61254	\$86,820	1				410			356	3				770
61258	\$66,151								1					1
61261	\$68,550			2		1			11					14
61270	\$74,259		2		5	21			63	49	4			144
61277	\$70,673		2	1	3	5			34		1			46
61283	\$65,438					79			5	19	3			106
61301	Not Available					480								480
61310	\$76,394		1	1	2	87			31	12	1			135
61313	Not Available								1					1
61318	\$83,560					4			2	14	1			21
61319	\$73,793				1				5					6
61321	\$62,624					2			3					5
61324	Not Available					1			3					4
61325	\$84,994					8			9	3	1			21
61326	Not Available					150								150
61332	Not Available					1			1					2
61333	\$74,277								3					3
61334	\$84,087					1			3					4
61336	Not Available								1					1

Plan 6 Stipulations

61341	\$74,651					30		1		2					33
61342	\$70,251		1	1	7	693		43	34	1					780
61349	\$78,582	1				2		6	4						13
61350	Not Available				2	2,949		1							2,952
61353	\$69,060	1			1	8		8	7						25
61356	Not Available					1,202									1,202
61358	\$67,933					1		3	3						7
61360	\$86,760				2	13		28	9	1					53
61362	Not Available					630									630
61364	\$66,759	3	3		7	964		283	185	15					1,460
61367	\$71,879					2		20							22
61369	\$65,052				5	12		6	16	1	1				41
61370	\$77,182	1			1	3		5	6						16
61376	\$78,991					4		18	6	1					29
61377	\$72,239				1	9		5							15
61378	\$77,534					1		2							3
61410	Not Available					48									48
61516	\$77,309							7							7
61701	Not Available					1									1
61738	Not Available							1							1
61739	\$73,664				1			1							2
61740	Not Available							1							1
61743	Not Available							1							1
61752	Not Available								4						4
61760	\$76,464			2	1	1		24							28
61764	\$66,498	1	2		15	1		354	72						445
61769	\$78,297				1			4	6						11
61884	Not Available							1							1
62561	Not Available								4						4
Program Totals		1,500	0	1,905	798	7,320	8,295	890,002	21	160,969	92,030	4,766	259	29	1,167,894

Notes

- Income data is from Q4 2021
- Program columns reflect programs where participation could be identified at the customer-level and/or tracked by zip-code. Excludes data from the following programs: Home Energy Reporting, Electric Homes New Construction.

SAG Reporting Working Group Metrics

Annual SAG Reporting Working Group Metrics

In June 2024, the SAG Reporting Working Group finalized metrics for the Illinois Energy Efficiency Policy Manual Version 3.0. These include metrics from the “Income Qualified Multi-Family Reporting Principles Policy (“IQ Multi-Family”), Equity and Affordability Reporting Principles Policy (“E&A”), Income Qualified Health and Safety Reporting Principles Policy (“IQ H&S”), and Diverse Contracting Reporting Policy (“Div Contr”). ComEd reports out on these metrics as follows:

IQ Multi-Family § 6.8 (i) As noted in the Final “Income Qualified Multi-Family Reporting Principles Policy” from Policy Manual Version 3.0, Section 6.8: Each Program Administrator will report on the effectiveness of its efforts to deliver efficiency improvements to the income qualified multi-family housing sector. In addition to standard Program reporting on spending and savings, Program Administrators will report on a statewide set of metrics designed to provide insight into a variety of other Program and policy objectives including:

- i. The mix of buildings being treated. This could include breakdowns between public housing, subsidized housing and unsubsidized housing; the type/size of buildings.

In support of (i), the following metrics will be reported annually:

Program Administrators will report the number of buildings and units participating in IQ multi-family EE programs in the following building categories:

- Public housing (meaning housing where the government owns or rents an apartment)
- Subsidized housing (meaning buildings for which government subsidies are provided to property owners or developers, i.e., not to individual tenants).
- Unsubsidized housing (meaning IQ multifamily housing that is neither public nor has project-based subsidies, this category may include properties with tenants that have tenant-based housing vouchers)

For each type of housing above, projects will be further broken out by size:

- Projects <20 units
- Projects 20-49 units
- Projects with 50+ units

2024 Updates

Table 5

Size	Housing Type	Number of Buildings		Number of Apartments	
		Central Heating System	Individual Heating System	Central Heating System	Individual Heating System
Buildings <20 Units	Public Housing	70	14	4,004	201
	Subsidized Housing	95	8	4,950	671
	Unsubsidized Housing	1,309	210	35,945	4,571
Buildings 20-49 Units	Public Housing	-	-	-	-
	Subsidized Housing	45	-	535	-
	Unsubsidized Housing	65	-	460	-
Buildings w/50+ Units	Public Housing	-	-	-	-
	Subsidized Housing	-	-	-	-
	Unsubsidized Housing	478	-	1,864	-

SAG Reporting Working Group Metrics

Note: Due to the timing of the finalization of the SAG Reporting Working Group Metrics, ComEd commenced collection of the types of Multi-family buildings treated under the Income Eligible and Public Housing Authority sub-programs after June 2024. Therefore the data presented in Table 5 reflects partial information for CY2024. ComEd intends to file the data it collects in 2025 as part of the 2025 Annual Energy Efficiency report filed in Q2 2026.

IQ Multi-Family § 6.8 (v) As noted in the Final “Income Qualified Multi-Family Reporting Principles Policy” from Policy Manual Version 3.0, Section 6.8: Each Program Administrator will report on the effectiveness of its efforts to deliver efficiency improvements to the income qualified multi-family housing sector. In addition to standard Program reporting on spending and savings, Program Administrators will report on a statewide set of metrics designed to provide insight into a variety of other Program and policy objectives including:

v. Leveraging of other funding sources to support income qualified multifamily retrofits.

In support of (v), the following metrics will be reported annually:

Report on any funding sources leveraged or combined for the IQ MF EE program where a Program Administrator leverages over \$500,000 or more per year, including:

1. Funding source;
2. Amount of funding;
3. Brief description of what the funding is being used for
4. Brief description of any joint or coordinated implementation with the leveraged funding entity and/or any constraints or program modifications resulting from leveraging; and
5. Any required owner co-pays or financing, including detail on what measures require copays and the amounts required

2024 Updates

Table 6

Funding Source	Amount of Funding	Funding Use	Funding Constraints, Joint Implementation, or Program modifications due to funding leveraging	Co-Pays or Financing Required
Nicor Gas	\$3,033,393	IQ rebate incentives	Fund provided through the joint utility program as incentive rebates to EESPs for jointly funded MFES projects.	None
North Shore Gas	\$167,272	IQ rebate incentives	Fund provided through the joint utility program as incentive rebates to EESPs for jointly funded MFES projects.	None
Peoples Gas	\$3,539,572	IQ rebate incentives	Fund provided through the joint utility program as incentive rebates to EESPs for jointly funded MFES projects.	None
IHWAP	\$592,474.34	IQ rebate incentives	Matching fund for IHWAP projects	None

SAG Reporting Working Group Metrics

IQ Multi-Family § 6.8 (vi) As noted in the Final “Income Qualified Multi-Family Reporting Principles Policy” from Policy Manual Version 3.0, Section 6.8: Each Program Administrator will report on the effectiveness of its efforts to deliver efficiency improvements to the income qualified multi-family housing sector. In addition to standard Program reporting on spending and savings, Program Administrators will report on a statewide set of metrics designed to provide insight into a variety of other Program and policy objectives including:

vi. Geographic distribution. This would include where buildings are served, which could be provided by zip code and/or census tract.

In support of (vi), the following metrics will be reported annually:

Geographic Reporting:

a. Program Administrators will report via spreadsheet each zip code they serve, whether the zip code is defined as an economically disadvantaged area, and income qualified multi-family EE program spending for each zip code.

2024 Updates

The following table (Table 7), provides a list of serviced zip codes for the Multi-Family program, whether the zip code is defined as an economically disadvantaged area, and the income qualified multi-family EE program spending for each zip code.

Table 7

Serviced Zip Codes	Economically Disadvantaged Area (DAC)	MF IE Program Spend	MF PHA Program Spend
60002	No	\$ -	\$ 12,480.00
60030	No	\$ 3,655.42	\$ 35,520.00
60031	No	\$ -	\$ 19,200.00
60073	No	\$ -	\$ 48,000.00
60084	No	\$ -	\$ 13,440.00
60178	No	\$ 98,382.25	\$ 31,500.00
60201	No	\$ 351,800.20	\$ 93,120.00
60520	No	\$ -	\$ 2,700.00
60550	No	\$ -	\$ 3,600.00
60613	No	\$ 343,087.98	\$ 11,252.60
60614	No	\$ 3,724.02	\$ 545,725.77
60622	No	\$ 199.56	\$ 6,762.50
60657	No	\$ 7,707.11	\$ 8,136.30
60714	No	\$ 7,567.81	\$ 94,400.00
61021	No	\$ 17,271.84	\$ 12,771.75
61087	No	\$ -	\$ 10,050.00
61310	No	\$ -	\$ 3,268.97
61367	No	\$ -	\$ 24,355.00
60115	Yes	\$ 830,490.20	\$ 434,946.93
60608	Yes	\$ 165,676.69	\$ 10,436.25

SAG Reporting Working Group Metrics

60609	Yes	\$ 68,109.86	\$ 5,934.05
60615	Yes	\$ 430,353.56	\$ 760.00
60616	Yes	\$ 201,272.66	\$ 817,167.90
60637	Yes	\$ 292,072.15	\$ 15,913.25
60649	Yes	\$ 361,738.18	\$ 3,439.25
60653	Yes	\$ 116,838.52	\$ 10,090.00
60827	Yes	\$ 4,615.20	\$ 19,059.50
61764	Yes	\$ 26,043.75	\$ 4,330.97
60005	No	\$ 9,964.25	\$ -
60010	No	\$ 215,739.10	\$ -
60016	No	\$ 414,209.70	\$ -
60025	No	\$ 85,119.50	\$ -
60026	No	\$ 26,750.00	\$ -
60030	No	\$ 3,655.42	\$ 35,520.00
60035	No	\$ 30,560.31	\$ -
60044	No	\$ 3,190.95	\$ -
60050	No	\$ 128,443.25	\$ -
60053	No	\$ 196,905.16	\$ -
60056	No	\$ 70,744.20	\$ -
60061	No	\$ 101,874.90	\$ -
60062	No	\$ 71,233.50	\$ -
60067	No	\$ 25,744.00	\$ -
60074	No	\$ 774,238.95	\$ -
60076	No	\$ 55,041.00	\$ -
60087	No	\$ 47,070.33	\$ -
60090	No	\$ 71,729.54	\$ -
60091	No	\$ 9,826.75	\$ -
60096	No	\$ 6,272.00	\$ -
60101	No	\$ 236,181.25	\$ -
60110	No	\$ 244,515.90	\$ -
60118	No	\$ 9,714.65	\$ -
60123	No	\$ 298,344.30	\$ -
60130	No	\$ 74,706.92	\$ -

SAG Reporting Working Group Metrics

60137	No	\$ 32,741.00	\$ -
60139	No	\$ 435.36	\$ -
60148	No	\$ 1,025,317.71	\$ -
60169	No	\$ 481,347.44	\$ -
60177	No	\$ 383,835.50	\$ -
60178	No	\$ 98,382.25	\$ 31,500.00
60181	No	\$ 26,906.64	\$ -
60201	No	\$ 351,800.20	\$ 93,120.00
60202	No	\$ 5,000.19	\$ -
60301	No	\$ 16,560.00	\$ -
60302	No	\$ 108,899.85	\$ -
60304	No	\$ 238,498.00	\$ -
60404	No	\$ 62,010.50	\$ -
60416	No	\$ 37,896.00	\$ -
60430	No	\$ 89,586.00	\$ -
60450	No	\$ 179,572.25	\$ -
60452	No	\$ 37,064.00	\$ -
60462	No	\$ 149.16	\$ -
60464	No	\$ 57,600.00	\$ -
60467	No	\$ 30,824.50	\$ -
60468	No	\$ 2,999.20	\$ -
60476	No	\$ 698.30	\$ -
60481	No	\$ 12,600.00	\$ -
60487	No	\$ 176.00	\$ -
60491	No	\$ 9,660.85	\$ -
60504	No	\$ 12,307.00	\$ -
60515	No	\$ 9,134.31	\$ -
60517	No	\$ 352,110.00	\$ -
60527	No	\$ 1,131,598.00	\$ -
60538	No	\$ 31,500.00	\$ -
60543	No	\$ 74,274.50	\$ -
60544	No	\$ 4,460.00	\$ -
60545	No	\$ 75,600.00	\$ -

SAG Reporting Working Group Metrics

60548	No	\$	123,436.25	\$	-
60559	No	\$	2,433.00	\$	-
60560	No	\$	94,500.00	\$	-
60605	No	\$	4,061.50	\$	-
60607	No	\$	12,740.27	\$	-
60610	No	\$	93,742.82	\$	-
60613	No	\$	343,087.98	\$	11,252.60
60614	No	\$	3,724.02	\$	545,725.77
60618	No	\$	90,622.95	\$	-
60622	No	\$	199.56	\$	6,762.50
60625	No	\$	13,088.42	\$	-
60630	No	\$	2,600.00	\$	-
60631	No	\$	46,477.00	\$	-
60634	No	\$	63,690.29	\$	-
60638	No	\$	18,258.50	\$	-
60640	No	\$	311,485.89	\$	-
60643	No	\$	754.47	\$	-
60647	No	\$	42,593.46	\$	-
60652	No	\$	31,603.05	\$	-
60655	No	\$	34,709.50	\$	-
60656	No	\$	3,072.00	\$	-
60657	No	\$	7,707.11	\$	8,136.30
60712	No	\$	68,187.70	\$	-
60714	No	\$	7,567.81	\$	94,400.00
60914	No	\$	10,896.31	\$	-
60915	No	\$	20,812.00	\$	-
60950	No	\$	4,531.10	\$	-
61010	No	\$	251,459.25	\$	-
61012	No	\$	126,000.00	\$	-
61021	No	\$	17,271.84	\$	12,771.75
61032	No	\$	1,512.81	\$	-
61048	No	\$	165,793.01	\$	-
61061	No	\$	27,686.25	\$	-

SAG Reporting Working Group Metrics

61062	No	\$	399.06	\$	-
61088	No	\$	2,505.06	\$	-
61107	No	\$	162,894.06	\$	-
61108	No	\$	849,779.75	\$	-
61109	No	\$	36,471.71	\$	-
61111	No	\$	262,990.59	\$	-
61114	No	\$	180,200.00	\$	-
61115	No	\$	4,606.39	\$	-
61342	No	\$	459,791.46	\$	-
60033	Yes	\$	40,633.95	\$	-
60064	Yes	\$	105.50	\$	-
60085	Yes	\$	295,330.74	\$	-
60088	Yes	\$	30,518.89	\$	-
60099	Yes	\$	20,914.70	\$	-
60104	Yes	\$	5,766.82	\$	-
60115	Yes	\$	830,490.20	\$	434,946.93
60120	Yes	\$	9,096.25	\$	-
60153	Yes	\$	11,844.47	\$	-
60155	Yes	\$	6,389.10	\$	-
60160	Yes	\$	15,818.38	\$	-
60164	Yes	\$	330,201.76	\$	-
60165	Yes	\$	1,836.75	\$	-
60171	Yes	\$	5,650.00	\$	-
60402	Yes	\$	8,072.67	\$	-
60403	Yes	\$	438,776.00	\$	-
60406	Yes	\$	3,785.12	\$	-
60409	Yes	\$	162,680.36	\$	-
60411	Yes	\$	303,791.85	\$	-
60415	Yes	\$	8,776.13	\$	-
60419	Yes	\$	2,121.50	\$	-
60426	Yes	\$	5,101.97	\$	-
60429	Yes	\$	69,469.60	\$	-
60432	Yes	\$	14,125.00	\$	-

SAG Reporting Working Group Metrics

60433	Yes	\$	54,019.68	\$	-
60435	Yes	\$	561,210.81	\$	-
60438	Yes	\$	10,331.20	\$	-
60445	Yes	\$	1,221.70	\$	-
60465	Yes	\$	900.36	\$	-
60466	Yes	\$	98,416.87	\$	-
60471	Yes	\$	48.00	\$	-
60505	Yes	\$	734,474.02	\$	-
60506	Yes	\$	501,444.90	\$	-
60534	Yes	\$	677.17	\$	-
60608	Yes	\$	165,676.69	\$	10,436.25
60609	Yes	\$	68,109.86	\$	5,934.05
60612	Yes	\$	23,677.54	\$	-
60615	Yes	\$	430,353.56	\$	760.00
60616	Yes	\$	201,272.66	\$	817,167.90
60617	Yes	\$	105,069.84	\$	-
60619	Yes	\$	336,556.97	\$	-
60620	Yes	\$	173,944.98	\$	-
60621	Yes	\$	49,570.17	\$	-
60623	Yes	\$	91,248.16	\$	-
60624	Yes	\$	46,759.24	\$	-
60626	Yes	\$	349,007.10	\$	-
60628	Yes	\$	48,127.73	\$	-
60629	Yes	\$	262,215.53	\$	-
60632	Yes	\$	8,240.10	\$	-
60633	Yes	\$	34,594.95	\$	-
60636	Yes	\$	8,560.25	\$	-
60637	Yes	\$	292,072.15	\$	15,913.25
60639	Yes	\$	147,121.17	\$	-
60641	Yes	\$	56,601.82	\$	-
60644	Yes	\$	211,976.07	\$	-
60645	Yes	\$	139,533.66	\$	-
60649	Yes	\$	361,738.18	\$	3,439.25

SAG Reporting Working Group Metrics

60651	Yes	\$	19,093.79	\$	-
60653	Yes	\$	116,838.52	\$	10,090.00
60659	Yes	\$	4,498.48	\$	-
60660	Yes	\$	263,044.89	\$	-
60707	Yes	\$	7,947.71	\$	-
60803	Yes	\$	835,411.00	\$	-
60804	Yes	\$	6,209.58	\$	-
60827	Yes	\$	4,615.20	\$	19,059.50
60901	Yes	\$	37,242.55	\$	-
61101	Yes	\$	52,000.04	\$	-
61103	Yes	\$	43,013.18	\$	-
61104	Yes	\$	22,018.63	\$	-
61764	Yes	\$	26,043.75	\$	4,330.97

SAG Reporting Working Group Metrics

IQ Multi-Family § 6.8 As noted in the Final “Income Qualified Multi-Family Reporting Principles Policy” from Policy Manual Version 3.0, Section 6.8: Independent evaluators for Illinois Program Administrators will report data in Annual Evaluation Reports on the number of buildings and apartments receiving various measures. In addition, for shell and heat pump measures, reporting includes separate reporting on whether the measures are applicable (qualified project), and if a project is qualified but the measures were not installed, the reasons why.

2024 Updates

The following tables (*Tables 8 and 9*) originate from the template provided by the SAG Reporting Working Group -see “[IQ Multi-Family Reporting Metrics Spreadsheet \(Final 6/5/2024\)](#)” and are provided here for informational purposes. Final data will be submitted by ComEd’s independent evaluator.

Table 8

t		Buildings	Apartments
Total participants			
Total participants w/electric heat			
Number participants where measure is installed:			
	Direct Install in-unit		
	Heat pumps		
	heat pump water heaters		
	Gas heating system replacements		
	Other HVAC equipment measures		
	Attic Insulation		
	Other Insulation		
	Air sealing		
	Common area lighting w/controls		
	Common area lighting w/o controls		
	Other		

Table 9

	Buildings	Apartments
Total Buildings / Units Served		
Total Buildings / Units Assessed		
Note: The following data is associated with buildings served with a Multi-Family Energy Savings assessment.		
Installed Insulation/Air Sealing Measures		
Did Not Install Insulation/Air Sealing Measures		

SAG Reporting Working Group Metrics

The following tables (*Tables 10 and 11*) provide data from the Multi-Family Program regarding reasons building envelope and heat pump measures were not installed. Tables 10 and 11 follow the template and format provided by the SAG Reporting Working Group -see "[IQ Multi-Family Reporting Metrics Spreadsheet \(Final 6/5/2024\)](#)".

Table 10

Reasons Building Envelope Measures Not Installed					
		Multi-Family Upgrades - Income Eligible		Multi-Family Upgrades - Public Housing Authority	
		Buildings	Apartments	Buildings	Apartments
A. Not qualified for measures		95	2,420	0	0
1	Measure already there/already upgraded	1	6	0	0
2	Not cost-effective	0	0	0	0
3	Cannot access attic or other space	59	716	0	0
4	Not applicable (e.g., no attic)	35	1,698	0	0
5	Health and safety cost too high or extensive	0	0	0	0
B. Qualified and offered measure, but didn't install		8	107	0	0
1	Building owner not willing to make co-pay	0	0	0	0
2	Building owner sees no benefit	0	0	0	0
3	Building owner will not accept disruption	0	0	0	0
4	Deferring to a future year	0	4	0	0
5	Building owner dislikes aesthetics	0	0	0	0
6	Building owner non-responsive	3	50	0	0
7	Building owner not willing/able to address Health&Safety work or deferrable conditions	0	0	0	0
8	No Reason Given	5	53	0	0

SAG Reporting Working Group Metrics

Table 11

Reasons Building Heat Pump Measures Not Installed					
		Multi-Family Upgrades – Income Eligible		Multi-Family Upgrades – Public Housing Authority	
		Buildings	Apartments	Buildings	Apartments
A.	Not qualified for measures	37	1,736	0	0
1	Measure already there/already upgraded	0	0	0	0
2	Not cost-effective	0	0	0	0
3	No good location or space	0	0	0	0
4	No Reason Given	37	1,736	0	0
B.	Qualified and offered measure, but didn't install	44	572	0	0
1	Building owner not willing to make co-pay	0	0	0	0
2	Building owner sees no benefit	0	0	0	0
3	Building owner will not accept disruption	0	0	0	0
4	Deferring to a future year	0	0	0	0
5	Building owner dislikes aesthetics	0	0	0	0
6	Building owner non-responsive	44	572	0	0
7	Building owner not willing/able to address Health & Safety work or deferrable conditions	0	0	0	0
8	Desired heat pump does not meet program specification requirements	0	0	0	0

Table 10 and Table 11 Notes

- Due to the start of the data collection process for this report which started in Q4 of 2024 some reasons measures were not installed may not have been collected dependent on the customer journey.
- Units may differ from other IQ reporting due to time of submission. Units can increase/decrease at later times when more accurate info is provided.
- "No reason given" was added to identify when no reason was given to MF team to move forward with project.
- Some PHA customers have been partnering with the utility energy efficiency offerings for multiple years. The original assessments for these customers' buildings may have been included in previous year's data. PHA project timelines can span multiple program years if internal housing authority approvals are delayed. In these cases, the corresponding assessments would have been included in previous year's data.
- Building count refers to any building where Direct Install (DI) and/or Retrofit measures have been implemented. If both DI and retrofit measures are applied within the same building, it is counted as a single building—no double counting. Apartment count refers to the number of individual units within each building.

SAG Reporting Working Group Metrics

E&A § 6.10 (i) As noted in the Final “Equity and Affordability Reporting Principles Policy” from Policy Manual Version 3.0, Section 6.10 Each Program Administrator will report on the delivery of its Energy Efficiency Programs to disadvantaged communities. In addition to standard reporting of disconnection and other credit and collections data by zip code already required by Section 8.201.10 of the Public Utilities Act, Program Administrators will report on a statewide set of metrics designed to provide insight into a variety of other Program and policy objectives, which shall include:

1. How participation in Program Administrator whole building retrofit Programs overlaps with geographic areas with economic need.

In support of (i), Independent evaluators for Illinois Program Administrators will include the following reporting metrics in Annual Evaluation Reports, separately for each EE program:

1. Total number of IQ single family whole building program participants.
2. Total number of IQ single family whole building program participants adopting air sealing.
3. Total number of IQ single family whole building program participants adopting insulation.
4. Total number of IQ single family whole building program participants with electric resistance heating adopting heat pumps.
5. Total number of IQ single family whole building program participants with fossil fuel heating adopting heat pumps.
6. Total number of IQ single family whole building program participants adopting heat pump water heaters.
7. Total number of IQ single family whole building program participants with fossil fuel heating or hot water systems replaced with another fossil fuel system.

2024 Updates

Response to this metric will be provided in a spreadsheet format in the Annual Evaluation Reports by ComEd's independent evaluator.

SAG Reporting Working Group Metrics

E&A § 6.10 (i-iii) As noted in the Final “Equity and Affordability Reporting Principles Policy” from Policy Manual Version 3.0, Section 6.10 Each Program Administrator will report on the delivery of its Energy Efficiency Programs to disadvantaged communities. In addition to standard reporting of disconnection and other credit and collections data by zip code already required by Section 8.201.10 of the Public Utilities Act, Program Administrators will report on a statewide set of metrics designed to provide insight into a variety of other Program and policy objectives, which shall include:

- i. How participation in Program Administrator whole building retrofit Programs overlaps with geographic areas with economic need;
- ii. How participation in Program Administrator whole building retrofit Programs overlaps with the Low Income Home Energy Assistance Program (LIHEAP) and Percentage of Income Payment Plan (PIPP) participation; and
- iii. How participation in Program Administrator whole building retrofit Programs overlaps with disadvantaged communities or other indicators of equity.

In support of (i-iii), the following metrics will be reported annually.

1. Report the total number of Income Qualified (IQ) Single Family (SF) EE program participants and spend by zip code.
2. Geographic Reporting:
 - a. Program Administrators will report via spreadsheet each zip code they serve, whether the zip code is defined as an economically disadvantaged area, and income qualified single family EE program spending for each zip code.

2024 Updates

The following tables provide program information for the Single Family Income Eligible Retrofits offering (*Table 12*) and the Single Family IHWAP offering (*Table 13*).

Table 12

Single Family IE Retrofits			
Zip Code	Program Spend - Total Rebates (\$)	Program Participants	Disadvantaged Community?
60002	\$9,177.54	2	No
60004	\$10,344.99	3	No
60005	\$15,047.10	2	No
60007	\$22,792.47	4	No
60010	\$15,027.55	2	No
60012	\$408.87	1	No
60013	\$22,248.22	2	No
60014	\$13,285.09	4	No
60015	\$3,818.04	1	No
60016	\$15,098.69	5	No
60018	\$10,480.04	2	Yes
60020	\$9,779.10	2	Yes
60025	\$16,970.20	4	No

SAG Reporting Working Group Metrics

60030	\$12,467.32	2	No
60034	\$492.61	1	No
60035	\$4,788.22	3	No
60040	\$4,537.00	1	No
60044	\$4,149.80	1	No
60046	\$15,331.89	2	No
60047	\$5,367.05	1	No
60050	\$17,284.78	3	No
60053	\$44,142.73	6	No
60056	\$7,409.00	3	No
60060	\$10,076.20	1	No
60061	\$7,865.45	2	No
60062	\$3,770.61	1	No
60067	\$15,058.96	3	No
60073	\$16,609.80	3	No
60075	\$4,034.91	1	No
60076	\$40,615.94	4	No
60077	\$19,957.69	5	No
60085	\$45,895.06	6	Yes
60087	\$14,039.72	3	No
60090	\$8,421.04	1	No
60091	\$14,814.00	3	No
60093	\$11,621.51	1	No
60097	\$492.61	1	No
60098	\$8,264.16	1	No
60099	\$12,103.77	2	Yes
60101	\$35,118.42	5	No
60103	\$14,200.05	3	No
60104	\$227,227.60	34	Yes
60106	\$20,365.85	5	No
60107	\$22,294.04	7	No
60109	\$500.00	1	No

SAG Reporting Working Group Metrics

60110	\$500.00	1	No
60115	\$46,428.32	6	Yes
60118	\$8,816.00	1	No
60120	\$12,256.20	3	Yes
60123	\$19,685.00	4	No
60124	\$9,681.00	1	No
60126	\$415.00	1	No
60130	\$23,519.98	2	No
60131	\$42,847.90	5	No
60133	\$38,394.42	7	No
60134	\$1,000.00	2	No
60135	\$8,784.00	2	No
60136	\$2,691.34	1	No
60137	\$800.00	2	No
60139	\$19,959.22	6	No
60140	\$500.00	1	No
60143	\$12,391.50	1	No
60148	\$48,724.50	7	No
60152	\$42,755.62	2	No
60153	\$54,133.46	16	Yes
60154	\$66,822.83	10	No
60155	\$35,945.62	11	Yes
60156	\$13,245.89	1	No
60157	\$400.00	1	No
60160	\$52,675.70	7	Yes
60162	\$52,685.02	12	Yes
60163	\$48,681.73	6	Yes
60164	\$33,973.34	7	Yes
60169	\$18,472.46	4	No
60171	\$10,516.49	1	Yes
60172	\$28,791.50	2	No
60173	\$9,503.66	2	No

SAG Reporting Working Group Metrics

60174	\$24,233.64	4	No
60175	\$23,250.02	2	No
60176	\$33,355.75	3	Yes
60181	\$99,701.98	10	No
60185	\$21,492.34	4	No
60187	\$37,531.75	2	No
60188	\$12,518.00	3	No
60189	\$13,912.00	1	No
60190	\$37,873.98	3	No
60191	\$14,438.00	1	No
60193	\$20,553.34	5	No
60194	\$6,896.40	1	No
60201	\$10,829.80	2	No
60202	\$1,320.98	1	No
60302	\$500.00	1	No
60304	\$5,482.00	1	No
60402	\$34,150.06	5	Yes
60403	\$126,470.20	29	Yes
60404	\$13,477.48	3	No
60406	\$47,062.18	14	Yes
60408	\$6,625.61	1	No
60409	\$344,086.66	53	Yes
60410	\$8,145.00	3	No
60411	\$590,041.35	64	Yes
60415	\$8,248.54	4	Yes
60416	\$400.00	1	No
60417	\$105,888.00	17	No
60418	\$106,954.13	9	No
60419	\$441,193.71	73	Yes
60422	\$26,686.72	7	No
60423	\$59,292.96	8	No
60424	\$449.00	1	No

SAG Reporting Working Group Metrics

60425	\$86,260.42	10	Yes
60426	\$196,434.48	34	Yes
60428	\$212,653.93	31	Yes
60429	\$181,573.13	25	Yes
60430	\$138,636.49	21	No
60431	\$90,325.00	6	No
60432	\$18,776.00	8	Yes
60433	\$52,552.88	7	Yes
60435	\$84,315.51	16	Yes
60436	\$10,719.77	6	Yes
60438	\$225,093.55	29	Yes
60439	\$39,315.50	3	No
60440	\$90,484.88	12	No
60441	\$66,113.56	14	No
60442	\$27,869.00	3	No
60443	\$326,436.73	34	No
60445	\$3,916.00	3	Yes
60446	\$32,611.25	10	No
60447	\$11,122.40	5	No
60448	\$48,751.75	4	No
60449	\$7,875.08	2	No
60450	\$88,207.00	7	No
60451	\$41,359.54	7	No
60452	\$216,871.09	21	No
60453	\$202,422.22	24	No
60455	\$11,429.50	2	Yes
60456	\$6,995.91	2	Yes
60457	\$53,098.91	4	No
60458	\$400.00	1	Yes
60459	\$68,707.77	8	Yes
60461	\$127,256.70	12	No
60462	\$60,968.33	4	No

SAG Reporting Working Group Metrics

60463	\$38,057.11	6	No
60464	\$6,042.39	1	No
60466	\$182,390.09	30	Yes
60467	\$65,939.64	7	No
60468	\$34,574.00	1	No
60469	\$93,581.18	9	Yes
60471	\$143,650.29	19	Yes
60472	\$109,371.38	9	Yes
60473	\$389,564.56	57	Yes
60474	\$20,732.00	1	No
60475	\$23,600.50	2	Yes
60476	\$10,808.00	3	No
60477	\$30,976.69	9	No
60478	\$301,252.38	34	No
60481	\$7,068.00	1	No
60482	\$11,152.42	4	Yes
60484	\$94,297.21	14	Yes
60487	\$19,611.13	2	No
60490	\$17,548.00	3	No
60491	\$400.00	1	No
60502	\$2,882.00	1	No
60503	\$22,088.96	3	No
60504	\$61,256.14	9	No
60505	\$9,016.75	5	Yes
60506	\$39,916.68	10	Yes
60511	\$14,544.48	1	No
60515	\$19,801.53	2	No
60516	\$32,447.12	5	No
60517	\$80,495.25	5	No
60521	\$830.00	1	No
60523	\$7,446.97	2	No
60525	\$22,809.76	2	No

SAG Reporting Working Group Metrics

60526	\$8,532.00	3	No
60527	\$17,374.96	2	No
60532	\$23,154.40	2	No
60534	\$997.00	2	Yes
60538	\$26,285.59	7	No
60542	\$8,327.00	2	No
60543	\$54,235.01	8	No
60544	\$65,527.15	8	No
60545	\$400.00	1	No
60546	\$11,825.31	2	No
60548	\$400.00	1	No
60554	\$2,435.39	1	No
60555	\$2,466.20	1	No
60559	\$29,318.00	2	No
60560	\$18,078.50	2	No
60561	\$18,525.53	3	No
60586	\$35,337.94	4	No
60608	\$44,070.42	7	Yes
60609	\$77,661.16	8	Yes
60612	\$6,767.20	2	Yes
60615	\$23,006.65	2	Yes
60617	\$770,707.86	91	Yes
60618	\$42,100.09	3	No
60619	\$751,933.04	104	Yes
60620	\$737,722.65	110	Yes
60621	\$115,869.85	12	Yes
60623	\$151,976.46	17	Yes
60624	\$96,165.79	12	Yes
60625	\$30,480.66	4	No
60628	\$987,005.97	119	Yes
60629	\$602,321.93	69	Yes
60630	\$37,643.23	5	No

SAG Reporting Working Group Metrics

60631	\$36,322.14	5	No
60632	\$174,048.66	23	Yes
60633	\$88,581.78	13	Yes
60634	\$130,893.48	18	No
60636	\$199,430.55	28	Yes
60637	\$117,298.57	13	Yes
60638	\$498,580.84	51	No
60639	\$196,492.87	24	Yes
60641	\$128,305.88	16	Yes
60643	\$715,633.08	95	No
60644	\$197,729.12	33	Yes
60645	\$22,313.76	2	Yes
60646	\$18,358.85	2	No
60647	\$24,163.02	2	No
60649	\$113,771.55	20	Yes
60651	\$156,873.96	21	Yes
60652	\$528,727.49	70	No
60653	\$50,737.73	6	Yes
60655	\$369,779.88	45	No
60656	\$6,627.66	2	No
60659	\$20,672.28	3	Yes
60706	\$43,378.87	7	No
60707	\$104,816.74	10	Yes
60712	\$37,265.66	5	No
60714	\$49,693.03	8	No
60803	\$31,808.07	5	Yes
60804	\$119,717.89	13	Yes
60805	\$121,505.46	16	No
60827	\$239,884.41	38	Yes
60901	\$152,067.75	21	Yes
60914	\$56,706.78	5	No
60915	\$11,386.00	2	No

SAG Reporting Working Group Metrics

60919	\$13,855.75	1	No
60950	\$17,029.00	1	No
60954	\$18,955.00	2	No
60958	\$400.00	1	Yes
61001	\$492.61	1	No
61008	\$492.61	1	No
61016	\$492.61	1	No
61021	\$77,365.48	7	No
61032	\$48,153.77	9	No
61046	\$500.00	1	No
61048	\$6,246.00	1	No
61061	\$7,704.80	2	No
61068	\$13,176.80	1	No
61073	\$18,865.12	3	No
61081	\$21,089.35	2	No
61101	\$52,173.25	13	Yes
61102	\$28,537.87	9	Yes
61103	\$39,967.23	9	Yes
61104	\$7,492.32	6	Yes
61107	\$77,786.94	13	No
61108	\$78,592.75	10	No
61109	\$45,448.01	5	No
61111	\$24,370.52	4	No
61114	\$30,958.38	4	No
61115	\$985.22	2	No
61254	\$500.00	1	No
61270	\$500.00	1	No
61318	\$2,871.00	1	No
61764	\$4,829.36	2	Yes

SAG Reporting Working Group Metrics

Table 13

Single Family IHWAP			
Zip Code	Program Spend - Total Rebates (\$)	Program Participants	Disadvantaged Community?
60004	\$2,480.33	1	No
60007	\$13,011.46	1	No
60013	\$19,303.04	4	No
60014	\$22,127.45	4	No
60018	\$4,811.58	1	Yes
60033	\$8,507.07	3	Yes
60042	\$15,047.14	3	No
60050	\$5,793.91	1	No
60051	\$16,456.07	3	No
60053	\$17,736.85	3	No
60071	\$5,829.09	1	No
60076	\$8,384.49	1	No
60081	\$5,624.09	1	No
60097	\$6,354.73	1	No
60101	\$3,628.68	1	No
60102	\$5,826.38	1	No
60104	\$21,546.55	3	Yes
60106	\$3,798.82	1	No
60108	\$15,727.87	2	No
60110	\$49,350.26	6	No
60115	\$34,622.93	3	Yes
60120	\$2,407.80	1	Yes
60123	\$37,317.92	6	No
60133	\$58,795.42	6	No
60136	\$7,842.87	1	No
60137	\$19,276.21	2	No
60139	\$19,308.11	2	No
60140	\$15,447.66	2	No

SAG Reporting Working Group Metrics

60142	\$29,585.81	5	No
60148	\$11,294.52	1	No
60152	\$14,397.13	1	No
60153	\$9,319.81	1	Yes
60154	\$6,099.79	1	No
60156	\$12,795.72	1	No
60160	\$5,826.84	1	Yes
60162	\$12,251.87	1	Yes
60164	\$16,988.25	3	Yes
60169	\$13,088.21	2	No
60174	\$2,792.51	1	No
60177	\$57,735.55	6	No
60178	\$6,833.62	1	No
60181	\$5,156.29	1	No
60190	\$8,053.34	1	No
60191	\$28,684.12	4	No
60203	\$22,546.43	1	No
60302	\$2,231.37	1	No
60401	\$6,438.67	1	No
60402	\$4,209.45	1	Yes
60403	\$15,691.17	3	Yes
60404	\$12,798.64	2	No
60406	\$41,463.22	4	Yes
60408	\$19,051.89	2	No
60409	\$50,263.89	6	Yes
60410	\$8,190.35	1	No
60411	\$39,410.32	4	Yes
60417	\$38,789.67	3	No
60419	\$22,792.01	4	Yes
60423	\$22,455.92	3	No
60425	\$18,126.88	2	Yes
60426	\$17,645.78	4	Yes

SAG Reporting Working Group Metrics

60429	\$11,580.87	2	Yes
60431	\$25,416.97	2	No
60432	\$14,259.21	2	Yes
60433	\$14,503.17	2	Yes
60435	\$5,291.76	1	Yes
60436	\$6,018.89	2	Yes
60438	\$38,444.02	6	Yes
60440	\$30,775.66	5	No
60443	\$10,400.67	3	No
60446	\$18,357.75	3	No
60449	\$20,862.29	3	No
60451	\$10,134.37	2	No
60453	\$30,325.35	4	No
60455	\$4,741.58	1	Yes
60456	\$5,896.03	1	Yes
60457	\$5,355.54	1	No
60461	\$29,776.62	2	No
60466	\$5,806.73	2	Yes
60468	\$6,763.04	1	No
60471	\$5,838.22	1	Yes
60473	\$30,318.62	5	Yes
60475	\$12,713.41	2	Yes
60476	\$3,398.09	1	No
60478	\$3,784.45	1	No
60481	\$5,166.40	1	No
60487	\$26,858.24	3	No
60491	\$10,253.41	1	No
60504	\$30,859.93	4	No
60505	\$52,610.98	5	Yes
60506	\$40,857.74	5	Yes
60514	\$6,819.62	1	No
60516	\$45,448.16	4	No

SAG Reporting Working Group Metrics

60517	\$14,786.28	1	No
60521	\$17,127.03	1	No
60527	\$12,397.41	1	No
60532	\$21,629.59	2	No
60538	\$51,524.31	5	No
60542	\$5,880.31	1	No
60548	\$7,120.80	1	No
60555	\$6,258.84	1	No
60559	\$16,754.55	2	No
60586	\$6,644.31	1	No
60617	\$29,476.50	5	Yes
60619	\$4,788.79	1	Yes
60620	\$50,282.28	14	Yes
60628	\$52,532.86	14	Yes
60629	\$13,909.64	3	Yes
60630	\$4,499.63	1	No
60632	\$3,648.65	1	Yes
60636	\$9,588.15	2	Yes
60638	\$17,769.14	3	No
60639	\$4,920.23	2	Yes
60643	\$20,284.17	4	No
60644	\$7,071.55	1	Yes
60645	\$5,813.32	1	Yes
60647	\$4,428.21	1	No
60649	\$6,540.27	2	Yes
60651	\$4,896.01	1	Yes
60652	\$31,785.12	5	No
60659	\$5,192.45	1	Yes
60803	\$6,904.38	1	Yes
60804	\$7,313.50	2	Yes
60805	\$6,840.04	1	No
60827	\$14,617.58	3	Yes

SAG Reporting Working Group Metrics

61054	\$5,840.04	1	No
61061	\$5,754.52	1	No
61283	\$7,059.37	1	No
61342	\$5,235.52	1	No
61364	\$23,854.10	3	Yes
61764	\$1,163.42	1	Yes

SAG Reporting Working Group Metrics

IQ H&S § 6.9

As noted in the Final “Income Qualified Health and Safety Reporting Principles Policy” from Policy Manual Version 3.0, Section 6.9: This policy is intended to provide transparency on how Program Administrators are addressing health and safety issues encountered through their income qualified weatherization Programs, to enable understanding of similarities and differences in opportunities and challenges experienced by each Program Administrator, as well as to make available data that can shed light on both successes and future opportunities for improvement in addressing such issues. Specifically, it requires that each Program Administrator report on the effectiveness of its efforts to address health and safety improvements necessary to enable Energy Efficiency retrofits – particularly building envelop upgrades, HVAC equipment upgrades and other major Measures – in income qualified single family and multi-family buildings. The reporting will be on a statewide set of metrics designed to provide insight into the following issues for both single family and multi-family buildings:

- i. How often health and safety concerns are found.
- ii. The types of health and safety concerns that are found and the Measures used to address those concerns.
- iii. How often the Programs are able to address (vs. unable to address) any health and safety concerns that are found and why.
- iv. Levels of spending to address health and safety concerns. v. Geographic and building type distribution of health and safety data.
- v. The types of materials used for air sealing and insulation

In support of the above, ComEd will report the following information for all IQ whole building programs (broken out by program):

1. Total number of housing projects or units, separately by income qualified EE program type (for example: Community Action Agency Single Family; Income Qualified Single Family, IQ Multifamily; etc.)
 - a. Include the number of housing projects or units where frequently observed health and safety issues, broken down in the following manner, were:
 - i. Observed
 - ii. Remediated
 - iii. Not remediated
 - b. For housing projects or units that could not be remediated, include why the remediation was not possible (for example: cost; not possible without another update to the building; customer did not want to remediate; etc.)
2. Number of EE program housing projects or units that were weatherized and received a health and safety update
3. Number of EE program housing projects or units that were weatherized and did not need a health and safety update
4. Number of housing projects or units that did not receive weatherization due to a health and safety issue
5. Through a pie chart, report the types of health and safety issues frequently observed in housing projects or units that did not receive weatherization due to a health and safety issue
6. Through a pie chart, report the types of health and safety issues frequently observed in housing projects or units that were weatherized and received a health and safety update
7. Report the total amount of health and safety spending by program channel
8. Report the percentage (%) of the total program spend for each health and safety issue
9. Geographic Reporting:
 - a. Program Administrators will report via spreadsheet each zip code they serve, whether the zip code is defined as an economically disadvantaged area, and health and safety spending for each zip code.
 - b. Nicor Gas will work to develop a beta interactive mapping mechanism. A draft mapping mechanism will be reviewed with the SAG Reporting Working Group for feedback by the end of Q2 2024

SAG Reporting Working Group Metrics

2024 Updates

In response of (1), the following tables provide program information for the Multi-Family Upgrades program (*Table 14*), the Home Energy Savings program (*Table 15*), and the Whole Home Electric program (*Table 15*).

Table 14

	Multi-Family Upgrades - Income Eligible		Multi-Family Upgrades - Public Housing Authority	
	Buildings	Apartments	Buildings	Apartments
H&S Issues Observed with H&S issues	48	898	0	0
H&S Issues Remedied	14	288	0	0
H&S Issues Not Remedied	34	610	0	0

Notes

- Issues observed by Implementation Contractor Outreach Team.
- “H&S Issues Not Remedied” are not deferrals from the Multi-Family upgrades program but unknown if H&S issues were addressed.

Table 15

	Whole Home Electric		Home Energy Savings		
	Single-Family	Multi-Family	IHWAP	Retrofits	HEA IE
Number of Properties Assessed	278	145	310	2,565	8,142
Number of Properties with Observed H&S issues	127	34	310	2,308	0
Number of Properties where H&S issues were Remediated	116	26	0	1,992	0
Number of Properties where H&S issues were Not Remediated	8	8	0	316	0

Notes

- Properties that could not be remediated from the Whole Home Electric program are due to the following reasons: Basement Issues, knob and tube wiring, structural damage, water infiltration/mold, collapsed drain, and roof damage.
- Structural deferral reasons from the Home Energy Savings Retrofits program include, but not limited to, the following: Excessive project cost, mold, roof issues, safety concern, standing water, and structural issues.
- IHWAP does not report this data specifically for braided production.
- HEA does not address H&S issues.
- Number of Retrofits properties with observed H&S issues has been updated as compared to the CY2024 Fourth Quarter report to include both the properties where H&S issues were remediated and were not remediated.

SAG Reporting Working Group Metrics

In response of (2-4), the following tables provide program information for the Multi-Family Upgrades program (*Table 16*), the Home Energy Savings program (*Table 17*), and the Whole Home Electric program (*Table 17*).

Table 16

	Multi-Family Upgrades - Income Eligible		Multi-Family Upgrades – Public Housing Authority	
	Buildings	Apartments	Buildings	Apartments
Both Weatherization and H&S Projects Completed	432	9,482	43	574
Weatherization projects completed, but did not need H&S Projects	469	9,023	3	282
Weatherization did not receive due to H&S Issues	0	0	0	0

Notes

- Issues observed by Energy Efficiency Service Providers (EESPs)

Table 17

	Whole Home Electric		Home Energy Savings	
	Single-Family	Multi-Family	IHWAP	Retrofits
Units Weatherized with H&S	12	16	152	1,880
Units Weatherized that did not need H&S	0	0	0	174
Units that could not be Weatherized due to a H&S issue	8	8	0	316

Notes

- For the Home Energy Savings program, True H&S is defined where project includes quantity > 1 of measure detail = health and safety.

SAG Reporting Working Group Metrics

In response of (5), the following charts provide program information for the Home Energy Savings program (*Chart 2*), and the Whole Home Electric program (*Chart 3-4*). Multi-Family Upgrades program reported zero (0) units that did not receive weatherization due to a health and safety issue. Therefore, there are no charts for this program.

Chart 2

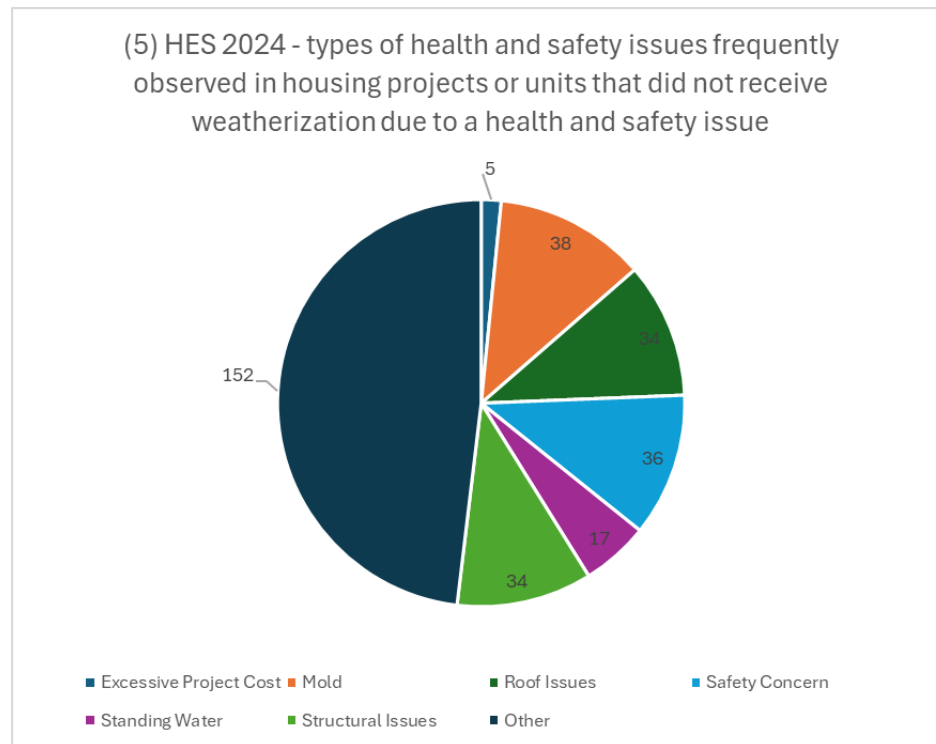


Chart 3

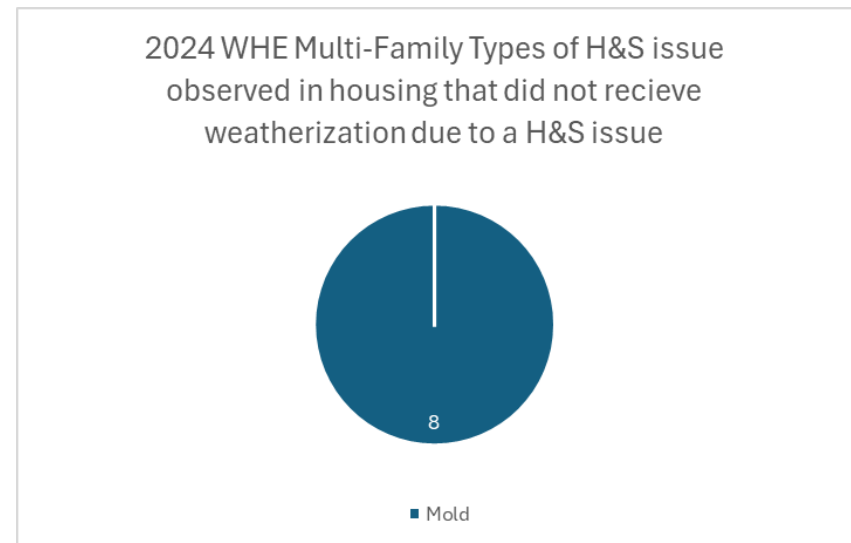
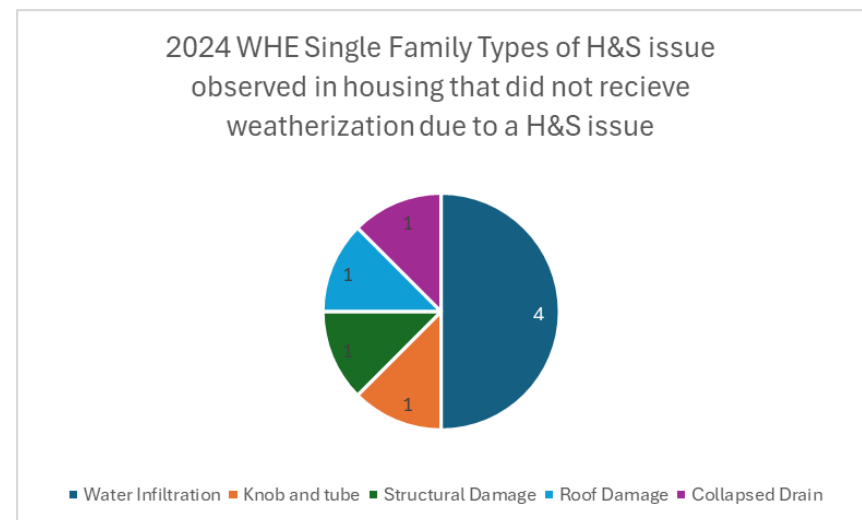


Chart 4



SAG Reporting Working Group Metrics

In response of (6), the following charts provide program information for the Multi-Family Upgrades program (Charts 5-6), the Home Energy Savings program (Chart 7), and the Whole Home Electric program (Charts 8-9)

Chart 5

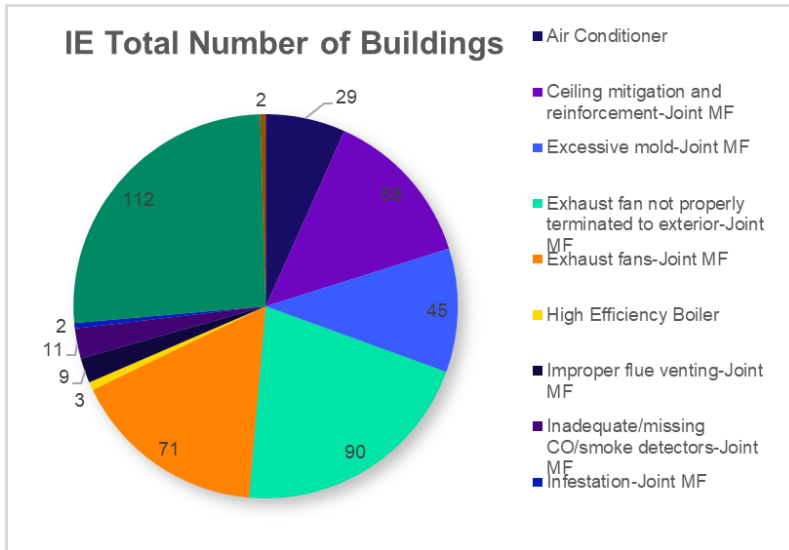


Chart 7

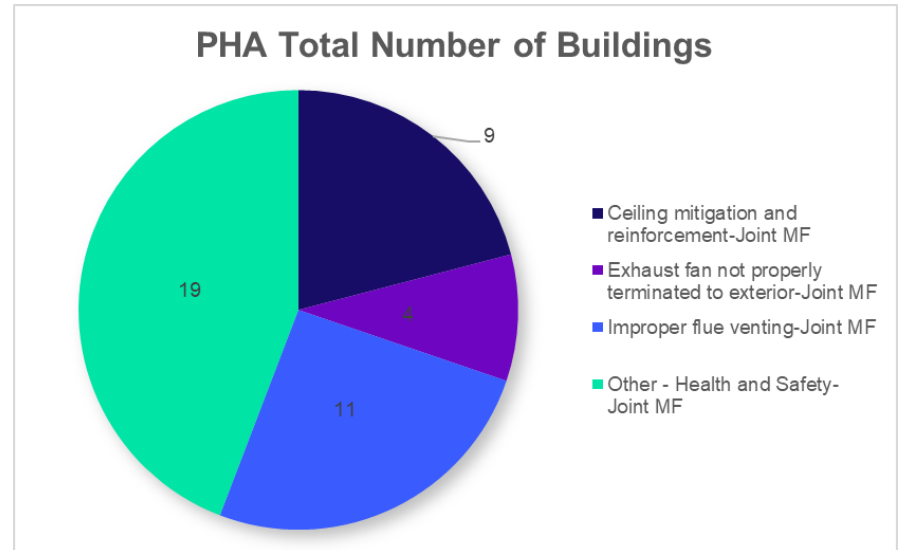


Chart 6

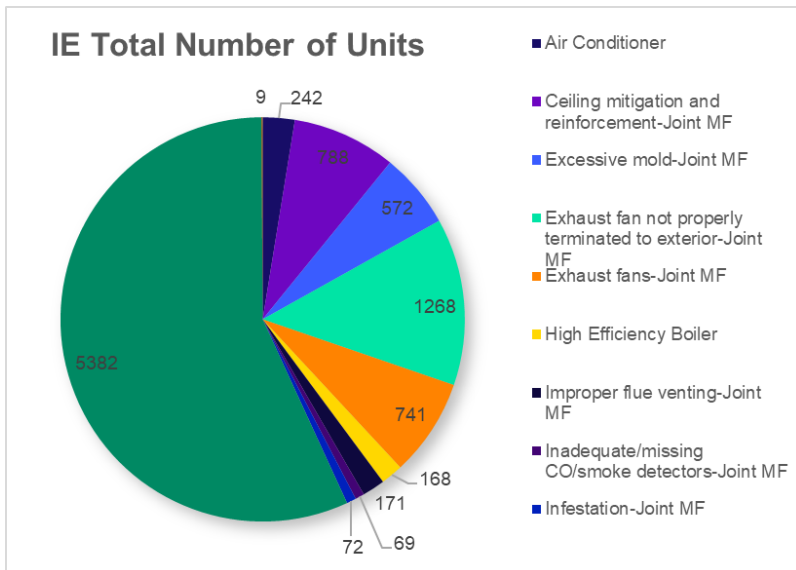
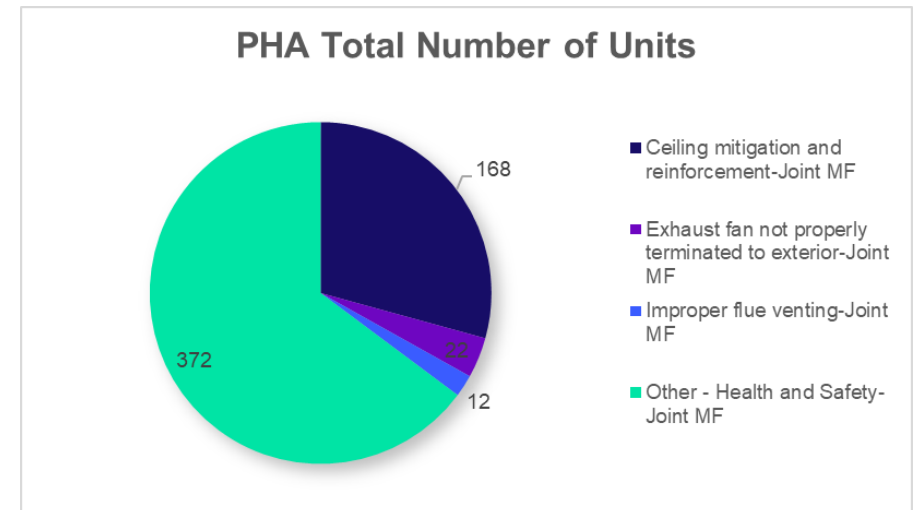


Chart 8



SAG Reporting Working Group Metrics

Chart 9

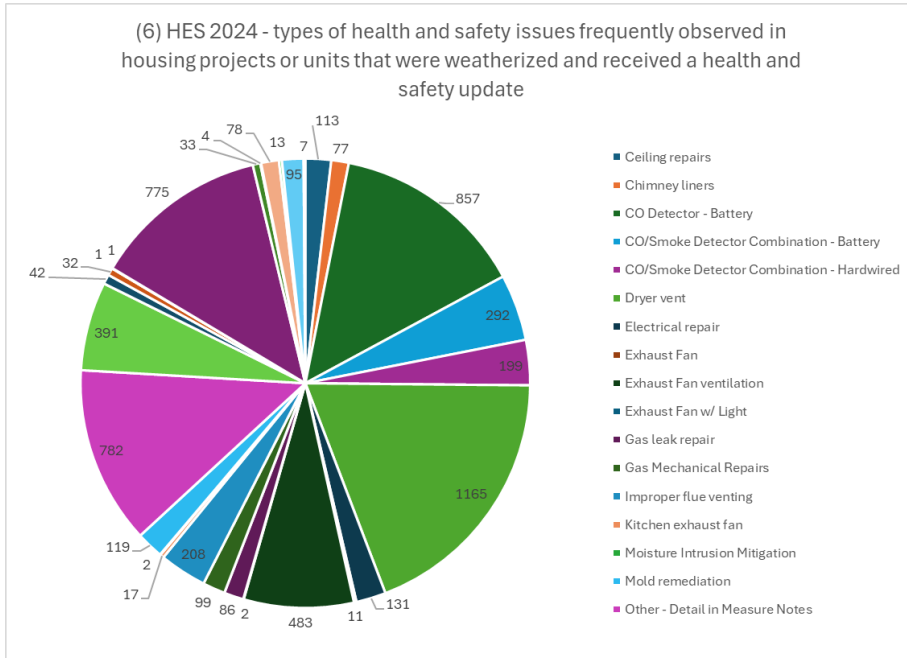


Chart 11

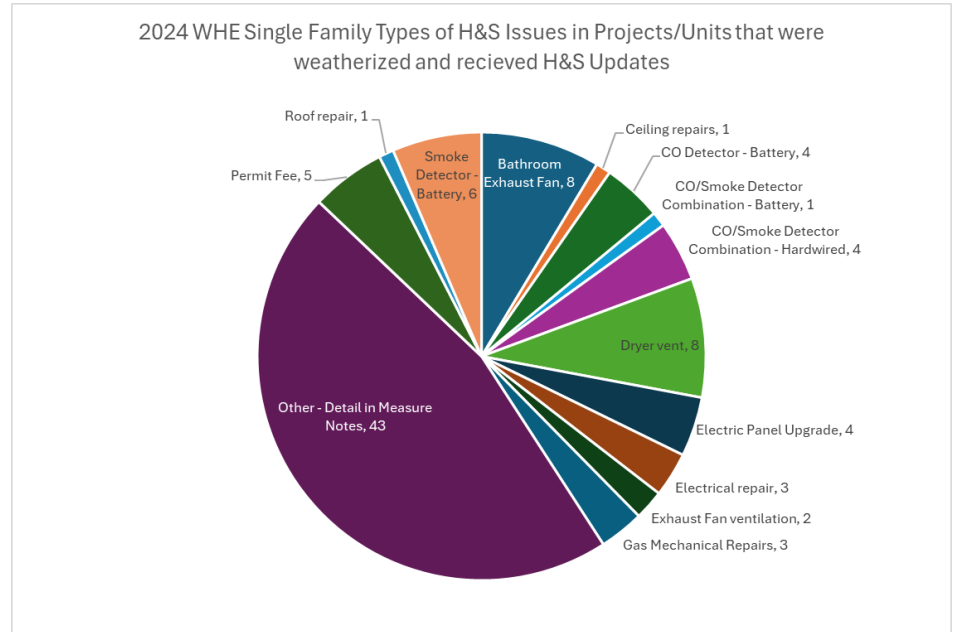
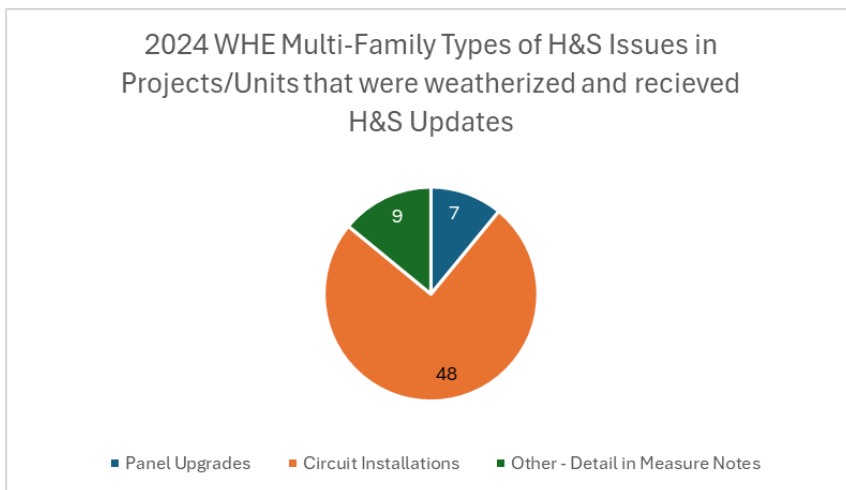


Chart 10



SAG Reporting Working Group Metrics

In response of (7), the following table (*Table 18*) provides program information for the Multi-Family Upgrades program, the Home Energy Savings program, and the Whole Home Electric program.

Table 18

	Multi-Family Upgrades		Whole Home Electric		Home Energy Savings	
	Income Eligible	Public Housing Authority	Single-Family	Multi-Family	IHWAP	Retrofits
2024 H&S Spend	\$3,477,632	\$1,309,438	\$1,608,759	\$107,650	\$630,710	\$5,213,744

Notes

- IHWAP H&S Spend includes dollars spent on bathroom and kitchen exhaust fans, emergency mechanical replacements, boiler, and furnace tune ups, which also contribute to energy savings. This has been corrected to exclude early mechanical replacement, which is an update as compared to the CY2024 Fourth Quarter Report.
- Retrofits H&S spend includes dollars spent on bathroom and kitchen exhaust fans, emergency mechanical replacements boiler and furnace tune ups, which also contribute to energy savings.

In response of (8), the following tables provide program information for the Multi-Family Upgrades program (*Table 19*), the Home Energy Savings program (*Table 20*), and the Whole Home Electric program (*Table 21*).

Table 19

H&S Measures (issues)	Multi-Family Upgrades - Income Eligible		Multi-Family Upgrades – Public Housing Authority	
Ceiling mitigation and reinforcement-Joint MF	\$ 709,558.50	2.28%	\$ 15,000.00	0.05%
Excessive mold-Joint MF	\$ 182,987.75	0.59%	\$ -	0.00%
Exhaust fan not properly terminated to exterior-Joint MF	\$ 605,957.50	1.94%	\$ 21,750.00	0.07%
Exhaust fans-Joint MF	\$ 72,720.00	0.23%	\$ 6,000.00	0.02%
Improper flue venting-Joint MF	\$ 18,330.40	0.06%	\$ 2,250.00	0.01%
Inadequate/missing CO/smoke detectors-Joint MF	\$ 9,567.50	0.03%	\$ 3,243.75	0.01%
Infestation-Joint MF	\$ 24,364.50	0.08%	\$ 127,899.98	0.41%
Other - Health and Safety-Joint MF	\$ 303,502.93	0.97%	\$ -	0.00%
Suspected asbestos containing building materials (BCBMs)-Joint MF	\$ 35,549.25	0.11%	\$ -	0.00%
Unsafe Electrical-Joint MF	\$ 4,500.00	0.01%	\$ 5,934.05	0.02%
Room Air Conditioner	\$ 1,185,108.00	0.01%	\$ 1,127,360.00	0.02%
High Efficiency Boiler	\$ 223,555.00	0.01%	\$ -	0.02%
Health and Safety Services-Custom-IHWAP-Joint MF	\$ 101,930.98	0.01%	\$ -	0.00%

Notes

- Percent of the total program spend by each safety issues was calculated by taking each H&S measure incentive against the IE and PHA 2024 goal combined.

SAG Reporting Working Group Metrics

Table 20

H&S Measures	Home Energy Savings - IHWAP		Home Energy Savings - Retrofits	
Bathroom Exhaust Fan	\$ 266,715	3%	\$ 1,785,240	7%
Health & Safety Services	\$ 186,600	2%	\$ 1,054,411	4%
Boiler Tune-Up	\$ -	0%	\$ 10,575	0%
Boilers, >95% AFUE <300 MBH	\$ -	0%	\$ 153,390	1%
Central Air Conditioning	\$ -	0%	\$ 1,262,022	5%
Furnace Tune-Up	\$ -	0%	\$ 121,212	0%
Furnace, >95% AFUE	\$ -	0%	\$ 590,908	2%
Kitchen Exhaust Fan	\$ -	0%	\$ 1,100	0%
Storage Water Heater, >0.67 EF	\$ -	0%	\$ 234,885	1%

Table 21

H&S Measures	Whole Home Electric - Single Family		Whole Home Electric - Multi Family	
Panel Upgrades	\$ -	0.0%	\$ 35,700	0.4%
Circuit Installations	\$ -	0.0%	\$ 49,400	0.5%
Bathroom Exhaust Fan	\$ 8,344	0.086%	\$ -	0.0%
Ceiling repairs	\$ 2,300	0.024%	\$ -	0.0%
CO Detector - Battery	\$ 400	0.004%	\$ -	0.0%
CO/Smoke Detector Combination - Battery	\$ 180	0.002%	\$ -	0.0%
CO/Smoke Detector Combination - Hardwired	\$ 563	0.006%	\$ -	0.0%
Dryer vent	\$ 9,065	0.094%	\$ -	0.0%
Electric Panel Upgrade	\$ 976,090	10.115%	\$ -	0.0%
Electrical repair	\$ 23,108	0.239%	\$ -	0.0%
Exhaust Fan ventilation	\$ 429	0.004%	\$ -	0.0%
Gas leak repair	\$ 395	0.004%	\$ -	0.0%
Gas Mechanical Repairs	\$ 620	0.006%	\$ -	0.0%
Permit Fee	\$ 51,774	0.537%	\$ -	0.0%
Plumbing repair	\$ 745	0.008%	\$ -	0.0%
Roof repair	\$ 2,190	0.023%	\$ -	0.0%
Smoke Detector - Battery	\$ 460	0.005%	\$ -	0.0%
Other	\$ 532,105	5.514%	\$ 22,550	0.2%

Notes

- "Other" includes: Security Cage, Mold Remediation, ASHRAE Fan/Continuous Flow Fan, Capping Gas Lines, Pots & , Pans, Drywall Repair, Plumbing Repair, Kitchen Exhaust Fan, Wind Baffles, Air Filter Installation, Surge Protector/breaker, Can Light Box Insulation, Rim Joist Insulation Removal, Battery Smoke Detectors, Electric Wiring Upgrades: ASHP, Supplemental heat, Dryer, and Part of Gutter & downspout repair cost, partly covered under Retrofits project.

SAG Reporting Working Group Metrics

In response of (9), the following tables provide program information for the Multi-Family Upgrades program (*Table 22*), the Home Energy Savings program (*Table 23*), and the Whole Home Electric program (*Table 24*).

Table 22

Serviced Zip Codes	Economically Disadvantaged Area (DAC) (Yes/No)	Multi-Family IE H&S Spend	Multi-Family PH H&S Spend
60002	No	N/A	\$ 12,480
60005	No	\$ 7,100	N/A
60016	No	\$ 180,239	N/A
60030	No	N/A	\$ 35,520
60031	No	N/A	\$ 19,200
60050	No	\$ 34,325	N/A
60053	No	\$ 34,391	N/A
60073	No	N/A	\$ 48,000
60084	No	N/A	\$ 13,440
60085	Yes	\$ 204,943	N/A
60087	No	\$ 10,990	N/A
60088	Yes	\$ 4,850	N/A
60101	No	\$ 10,568	N/A
60104	Yes	\$ 1,170	N/A
60110	No	\$ 43,750	N/A
60115	Yes	\$ 94,890	\$169,250
60120	Yes	\$ 1,150	N/A
60123	No	\$ 27,406	N/A
60130	No	\$ 60,960	N/A
60148	No	\$ 84,240	N/A
60155	Yes	\$ 570	N/A
60160	Yes	\$ 3,335	N/A
60165	Yes	\$ 1,350	N/A
60169	No	\$ 212,464	N/A
60177	No	\$ 16,520	N/A
60178	No	\$ 12,400	N/A

SAG Reporting Working Group Metrics

60201	No	N/A	\$ 93,120
60202	No	\$ 354	N/A
60302	No	\$ 8,425	N/A
60304	No	\$ 26,880	N/A
60402	Yes	\$ 6,950	N/A
60403	Yes	\$ 118,550	N/A
60409	Yes	\$ 105,228	N/A
60411	Yes	\$ 51,209	N/A
60416	No	\$ 4,200	N/A
60419	Yes	\$ 1,010	N/A
60426	Yes	\$ 505	N/A
60435	Yes	\$ 413,880	N/A
60445	Yes	\$ 250	N/A
60450	No	\$ 53,627	N/A
60466	Yes	\$ 13,155	N/A
60468	No	\$ 1,150	N/A
60476	No	\$ 125	N/A
60505	Yes	\$ 90,780	N/A
60506	Yes	\$ 38,564	N/A
60517	No	\$ 4,875	N/A
60527	No	\$ 412,128	N/A
60548	No	\$ 8,922	N/A
60608	Yes	\$ 20,401	N/A
60609	Yes	\$ 708	\$ 5,934
60612	Yes	\$ 1,677	N/A
60613	No	\$ 246,080	N/A
60614	No	\$ 67,540	N/A
60615	Yes	\$ 200	N/A
60616	Yes	N/A	\$811,200
60617	Yes	\$ 24,531	N/A
60619	Yes	\$ 10,249	N/A
60620	Yes	\$ 3,062	N/A
60623	Yes	\$ 1,450	N/A

SAG Reporting Working Group Metrics

60626	Yes	\$ 184	N/A
60629	Yes	\$ 8,441	N/A
60632	Yes	\$ 1,016	N/A
60636	Yes	\$ 4,950	N/A
60637	Yes	\$ 10,602	N/A
60639	Yes	\$ 1,336	N/A
60640	No	\$ 40,744	N/A
60644	Yes	\$ 14,434	N/A
60645	Yes	\$ 13,086	N/A
60647	No	\$ 4,092	N/A
60649	Yes	\$ 15,749	N/A
60651	Yes	\$ 990	N/A
60652	No	\$ 8,920	N/A
60707	Yes	\$ 375	N/A
60714	No	\$ 1,600	\$ 94,400
60803	Yes	\$ 334,883	N/A
60827	Yes	\$ 1,260	N/A
60901	Yes	\$ 500	N/A
60915	No	\$ 11,500	N/A
61010	No	\$ 27,443	N/A
61021	No	N/A	\$ 4,894
61061	No	\$ 1,280	N/A
61101	Yes	\$ 6,200	N/A
61103	Yes	\$ 7,250	N/A
61107	No	\$ 7,375	N/A
61108	No	\$ 127,909	N/A
61109	No	\$ 11,408	N/A
61111	No	\$ 3,150	N/A
61114	No	\$ 3,000	N/A
61310	No	N/A	\$ 460
61342	No	\$ 23,232	N/A
61367	No	N/A	\$ 1,540
61764	Yes	\$ 450	N/A

SAG Reporting Working Group Metrics

Table 23

Serviced Zip Codes	Economically Disadvantaged Area (DAC)	HES H&S Spend
60002	No	\$3,725
60004	No	\$3,473
60005	No	\$2,165
60007	No	\$3,928
60010	No	\$3,050
60013	No	\$13,176
60014	No	\$9,956
60015	No	\$1,775
60016	No	\$4,112
60018	Yes	\$5,960
60020	Yes	\$2,275
60025	No	\$7,430
60030	No	\$7,575
60033	Yes	\$3,711
60035	No	\$1,000
60040	No	\$1,775
60042	No	\$3,678
60044	No	\$1,275
60046	No	\$3,538
60047	No	\$1,775
60050	No	\$5,112
60051	No	\$4,066
60053	No	\$15,988
60056	No	\$952
60060	No	\$8,066
60061	No	\$3,075
60062	No	\$1,300
60067	No	\$2,936
60071	No	\$1,544
60073	No	\$4,225
60075	No	\$2,195
60076	No	\$15,737

SAG Reporting Working Group Metrics

60077	No	\$7,993
60081	No	\$1,079
60085	Yes	\$8,122
60087	No	\$3,850
60090	No	\$4,021
60091	No	\$2,078
60093	No	\$1,145
60097	No	\$1,347
60098	No	\$1,564
60099	Yes	\$2,861
60101	No	\$5,237
60102	No	\$1,125
60103	No	\$5,129
60104	Yes	\$81,412
60106	No	\$4,029
60107	No	\$2,245
60108	No	\$2,796
60110	No	\$8,516
60115	Yes	\$16,673
60118	No	\$1,400
60120	Yes	\$2,880
60123	No	\$8,862
60124	No	\$1,671
60130	No	\$1,280
60131	No	\$9,434
60133	No	\$17,412
60135	No	\$1,100
60136	No	\$2,590
60137	No	\$2,248
60139	No	\$7,683
60140	No	\$3,191
60142	No	\$5,501
60143	No	\$7,857
60148	No	\$9,181
60152	No	\$7,099
60153	Yes	\$15,638

SAG Reporting Working Group Metrics

60154	No	\$24,395
60155	Yes	\$11,224
60156	No	\$5,968
60160	Yes	\$16,199
60162	Yes	\$18,622
60163	Yes	\$7,637
60164	Yes	\$13,560
60169	No	\$10,221
60171	Yes	\$1,280
60172	No	\$14,200
60173	No	\$1,200
60174	No	\$11,491
60175	No	\$5,778
60176	Yes	\$4,494
60177	No	\$6,752
60178	No	\$1,062
60181	No	\$22,627
60185	No	\$13,737
60187	No	\$18,257
60188	No	\$5,098
60189	No	\$695
60190	No	\$5,522
60191	No	\$6,858
60193	No	\$3,281
60194	No	\$1,426
60201	No	\$1,678
60202	No	\$1,201
60203	No	\$5,043
60302	No	\$2,210
60304	No	\$1,078
60401	No	\$1,101
60402	Yes	\$7,052
60403	Yes	\$50,362
60404	No	\$11,527
60406	Yes	\$33,754
60408	No	\$7,939

SAG Reporting Working Group Metrics

60409	Yes	\$172,064
60410	No	\$2,366
60411	Yes	\$187,661
60415	Yes	\$3,064
60417	No	\$32,321
60418	No	\$31,612
60419	Yes	\$163,243
60422	No	\$5,931
60423	No	\$21,168
60424	No	\$117
60425	Yes	\$39,758
60426	Yes	\$65,057
60428	Yes	\$98,696
60429	Yes	\$57,154
60430	No	\$33,199
60431	No	\$44,898
60432	Yes	\$10,374
60433	Yes	\$23,540
60435	Yes	\$24,450
60436	Yes	\$3,126
60438	Yes	\$88,812
60439	No	\$10,792
60440	No	\$36,973
60441	No	\$22,867
60442	No	\$9,381
60443	No	\$91,672
60445	Yes	\$1,030
60446	No	\$16,398
60447	No	\$4,043
60448	No	\$21,382
60449	No	\$4,853
60450	No	\$17,805
60451	No	\$12,843
60452	No	\$45,546
60453	No	\$58,570
60455	Yes	\$4,285

SAG Reporting Working Group Metrics

60456	Yes	\$2,888
60457	No	\$21,026
60459	Yes	\$22,810
60461	No	\$31,153
60462	No	\$21,385
60463	No	\$6,103
60464	No	\$1,405
60466	Yes	\$62,958
60467	No	\$18,987
60468	No	\$19,765
60469	Yes	\$20,724
60471	Yes	\$63,940
60472	Yes	\$41,107
60473	Yes	\$124,091
60474	No	\$6,846
60475	Yes	\$10,881
60476	No	\$1,628
60477	No	\$5,920
60478	No	\$84,795
60481	No	\$2,668
60482	Yes	\$6,811
60484	Yes	\$22,825
60487	No	\$10,718
60490	No	\$2,775
60491	No	\$1,659
60502	No	\$350
60503	No	\$13,397
60504	No	\$24,607
60505	Yes	\$8,702
60506	Yes	\$14,146
60511	No	\$5,952
60514	No	\$1,407
60515	No	\$8,583
60516	No	\$12,100
60517	No	\$20,807
60521	No	\$1,752

SAG Reporting Working Group Metrics

60523	No	\$4,161
60525	No	\$2,076
60526	No	\$835
60527	No	\$3,265
60532	No	\$4,560
60534	Yes	\$250
60538	No	\$17,755
60542	No	\$3,996
60543	No	\$10,830
60544	No	\$18,376
60546	No	\$2,730
60548	No	\$987
60554	No	\$600
60555	No	\$1,931
60559	No	\$11,161
60560	No	\$4,700
60561	No	\$5,413
60586	No	\$9,672
60608	Yes	\$8,266
60609	Yes	\$17,610
60612	Yes	\$1,185
60615	Yes	\$2,430
60617	Yes	\$208,869
60618	No	\$4,852
60619	Yes	\$176,752
60620	Yes	\$210,449
60621	Yes	\$12,180
60623	Yes	\$31,741
60624	Yes	\$25,898
60625	No	\$12,546
60628	Yes	\$237,407
60629	Yes	\$177,680
60630	No	\$13,136
60631	No	\$5,949
60632	Yes	\$40,721
60633	Yes	\$27,795

SAG Reporting Working Group Metrics

60634	No	\$19,799
60636	Yes	\$38,253
60637	Yes	\$16,019
60638	No	\$101,203
60639	Yes	\$54,196
60641	Yes	\$38,621
60643	No	\$240,454
60644	Yes	\$49,427
60645	Yes	\$4,177
60646	No	\$7,476
60647	No	\$5,020
60649	Yes	\$31,018
60651	Yes	\$33,721
60652	No	\$123,032
60653	Yes	\$7,643
60655	No	\$87,765
60656	No	\$2,228
60659	Yes	\$5,922
60706	No	\$6,916
60707	Yes	\$26,807
60712	No	\$10,259
60714	No	\$13,611
60803	Yes	\$23,831
60804	Yes	\$50,031
60805	No	\$29,547
60827	Yes	\$96,062
60901	Yes	\$39,172
60914	No	\$16,160
60915	No	\$1,175
60919	No	\$2,945
60950	No	\$600
60954	No	\$2,265
61021	No	\$4,104
61032	No	\$24,814
61048	No	\$988
61054	No	\$1,416

SAG Reporting Working Group Metrics

61061	No	\$2,121
61068	No	\$1,000
61073	No	\$4,095
61081	No	\$2,027
61101	Yes	\$11,523
61102	Yes	\$11,627
61103	Yes	\$9,749
61104	Yes	\$722
61107	No	\$28,247
61108	No	\$34,559
61109	No	\$18,347
61111	No	\$14,016
61114	No	\$19,204
61283	No	\$1,084
61318	No	\$76
61342	No	\$631
61364	Yes	\$3,883
61764	Yes	\$2,664

Table 24

Serviced Zip Codes	Economically Disadvantaged Area (DAC)	WHE H&S Spend
60051	No	\$ -
60062	No	\$ -
60076	No	\$ -
60099	Yes	\$ 12,785.02
60104	Yes	\$ 14,388.02
60107	No	\$ 28,780.04
60110	No	\$ 13,595.52
60115	Yes	\$ 4,635.81
60118	No	\$ 8,895.00
60133	No	\$ -
60139	No	\$ -
60140	No	\$ -

SAG Reporting Working Group Metrics

60152	No	\$ -
60153	Yes	\$ -
60155	Yes	\$ 18,883.02
60160	Yes	\$ 14,715.00
60302	No	\$ -
60304	No	\$ -
60402	Yes	\$ 13,095.02
60409	Yes	\$ -
60411	Yes	\$ 28,770.04
60415	Yes	\$ -
60419	Yes	\$ 27,801.04
60422	No	\$ -
60423	No	\$ -
60425	Yes	\$ -
60426	Yes	\$ 13,652.52
60428	Yes	\$ 45,101.46
60429	Yes	\$ 14,870.00
60438	Yes	\$ 25,806.79
60440	No	\$ -
60443	No	\$ 12,895.02
60446	No	\$ -
60453	No	\$ 13,370.02
60455	Yes	\$ -
60456	Yes	\$ -
60457	No	\$ -
60459	Yes	\$ 12,924.02
60462	No	\$ -
60466	Yes	\$ 27,350.04
60467	No	\$ -
60469	Yes	\$ 9,371.02
60472	Yes	\$ -
60473	Yes	\$ 39,397.24

SAG Reporting Working Group Metrics

60475	Yes	\$ -
60477	No	\$ -
60478	No	\$ 42,105.04
60484	Yes	\$ 32,068.04
60490	No	\$ -
60501	Yes	\$ -
60504	No	\$ -
60506	Yes	\$ -
60544	No	\$ -
60559	No	\$ -
60561	No	\$ 14,260.02
60586	No	\$ 14,020.02
60605	No	\$ -
60609	Yes	\$ 39,910.06
60615	Yes	\$ -
60617	Yes	\$ 131,605.10
60619	Yes	\$ 102,821.12
60620	Yes	\$ 110,378.53
60621	Yes	\$ 40,316.31
60623	Yes	\$ 31,600.00
60624	Yes	\$ -
60628	Yes	\$ 152,730.16
60629	Yes	\$ 41,160.06
60630	No	\$ 10,145.00
60632	Yes	\$ -
60633	Yes	\$ 14,535.02
60634	No	\$ 26,390.04
60636	Yes	\$ 13,720.02
60637	Yes	\$ 28,895.02
60638	No	\$ 13,920.02
60639	Yes	\$ -
60641	Yes	\$ -

SAG Reporting Working Group Metrics

60643	No	\$ 89,071.06
60644	Yes	\$ 32,320.02
60649	Yes	\$ 22,250.00
60651	Yes	\$ 70,200.00
60652	No	\$ 72,105.08
60653	Yes	\$ 30,690.04
60655	No	\$ 13,720.02
60707	Yes	\$ -
60803	Yes	\$ 14,125.02
60805	No	\$ 17,130.02
60827	Yes	\$ 30,771.04
60958	Yes	\$ -
61008	No	\$ -
61073	No	\$ 23,720.00
61080	No	\$ -
61102	Yes	\$ -
61103	Yes	\$ 7,670.00
61107	No	\$ 20,005.06
61108	No	\$ -
61109	No	\$ 10,970.00
61111	No	\$ -
61114	No	\$ -
61115	No	\$ -
61342	No	\$ -

SAG Reporting Working Group Metrics

Div Contr § 6.11(i-iii) As noted in the Final “Diverse Contracting Reporting Principles Policy” from Policy Manual Version 3.0, Section 6.11: Each Program Administrator will report on its efforts to enable and provide increases in diverse contracting within the Program Administrators’ Energy Efficiency Portfolios. In addition to any standard diverse contractor reporting already undertaken by Program Administrators pursuant to Section 5-117 of the Public Utilities Act, and for electric utilities, as ordered by the Commission in the electric utility performance-based ratemaking dockets (ICC Docket Nos. 22-0063 and 22-0067), Program Administrators will report on a statewide set of metrics designed to provide insight into the policy objective of increasing opportunities for diverse contractors and Trade Allies to engage in Energy Efficiency and other policy objectives.

The set of metrics designed to provide insight into the policy objective of increasing opportunities for diverse contractors and Trade Allies to engage in Energy Efficiency and other policy objectives may include:

- i. Number of diverse Trade Allies and their specialties.
- ii. How diverse Trade Allies are distributed geographically by Program.
- iii. Location of diverse Trade Allies relative to historically disadvantaged communities and Environmental Justice communities, whichever is more inclusive of low and moderate income communities.

Ameren Illinois, ComEd, and Nicor Gas Annual Reporting Metrics for Trade Allies:

1. Report total number of participating Energy Efficiency Program Trade Allies and diverse Trade Allies broken out by category of primary specialty (e.g., HVAC, plumbing, weatherization, electrical, etc.)
2. The percentage of diverse Trade Allies, broken out by category of primary specialty (e.g., HVAC, plumbing, weatherization, electrical, etc.), whose primary business location is in an economically disadvantaged community

2024 Updates

In response of (1), the following tables (*Tables 25 and 26*) provide information on the Energy Efficiency Program Trade Allies totals broken out by category of primary specialty (e.g., HVAC, plumbing, weatherization, electrical, etc.).

Table 25

Number of Active Trade Allies by Specialty	
Consulting	7
Distributors	36
Engineering Firm	26
General Contractor	14
GEO-HVAC	15
HVAC	145
Lighting	100
Multi Services	130
Other	178
Total:	651

SAG Reporting Working Group Metrics

Table 26

Number of Diverse Trade Allies by Specialty:	
Consulting	7
Engineering Firm	5
GEO-HVAC	1
HVAC	4
Lighting	10
Multi Services	9
Other	4
Total:	40

In response of (2), the following table (Tables 27) present the percentage of diverse Trade Allies, broken out by category of primary specialty (e.g., HVAC, plumbing, weatherization, electrical, etc.), whose primary business location is in an economically disadvantaged community.

Table 27

	Diverse Trade Allies in Disadvantaged Area	Percentage of Diverse Trade Allies
HVAC	1	2.5%
Lighting	2	5.0%
Multi Services	2	5.0%
Total:	5	12.5%