



Opinion **Dynamics**  
an E Source Company

# OVERVIEW OF AMEREN ILLINOIS NON-ENERGY IMPACTS RESEARCH

PRESENTATION TO ILLINOIS STAKEHOLDER ADVISORY  
GROUP NON-ENERGY IMPACTS WORKING GROUP

NOVEMBER 5, 2025



# SUMMARY OF AMEREN ILLINOIS NEI STUDIES



## Utility Research (Arrearage Reductions)

Intent of study was to estimate benefits accruing to utility from reductions in effort and cost of pursuing collections, carrying customer debt, and funding bill payment assistance programs.

Research was not completed.



## Nonresidential Participant Research

We conducted exploratory research to estimate NEIs accruing to nonresidential customers implementing certain key measures.

These impacts are not currently incorporated into CE testing; research was designed to support portfolio outreach.



## IQ Participant Research

We conducted research to estimate safety, comfort, and economic NEIs resulting from participation in the AIC IQ Initiative.

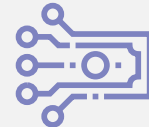
Avoided medical payment assistance use is monetized and incorporated into CE testing.



## Societal Research (Public Health)

We annually estimate and report societal public health benefits tied to decreased criteria pollutant emissions (PM<sub>2.5</sub> and O<sub>3</sub>) resulting from AIC portfolio energy savings.

These impacts are incorporated into CE testing.



## Macroeconomic & Job Impacts

We annually estimate and report macroeconomic and job impacts resulting from AIC's EE portfolio investments (direct, indirect, and induced benefits).

These impacts are not appropriate to incorporate into CE testing.

Research discontinued  
in 2020\*

Research completed in  
2022

Research completed  
in 2023

Annual estimates;  
model updated in 2024

Annual estimates;  
model updates in 2026

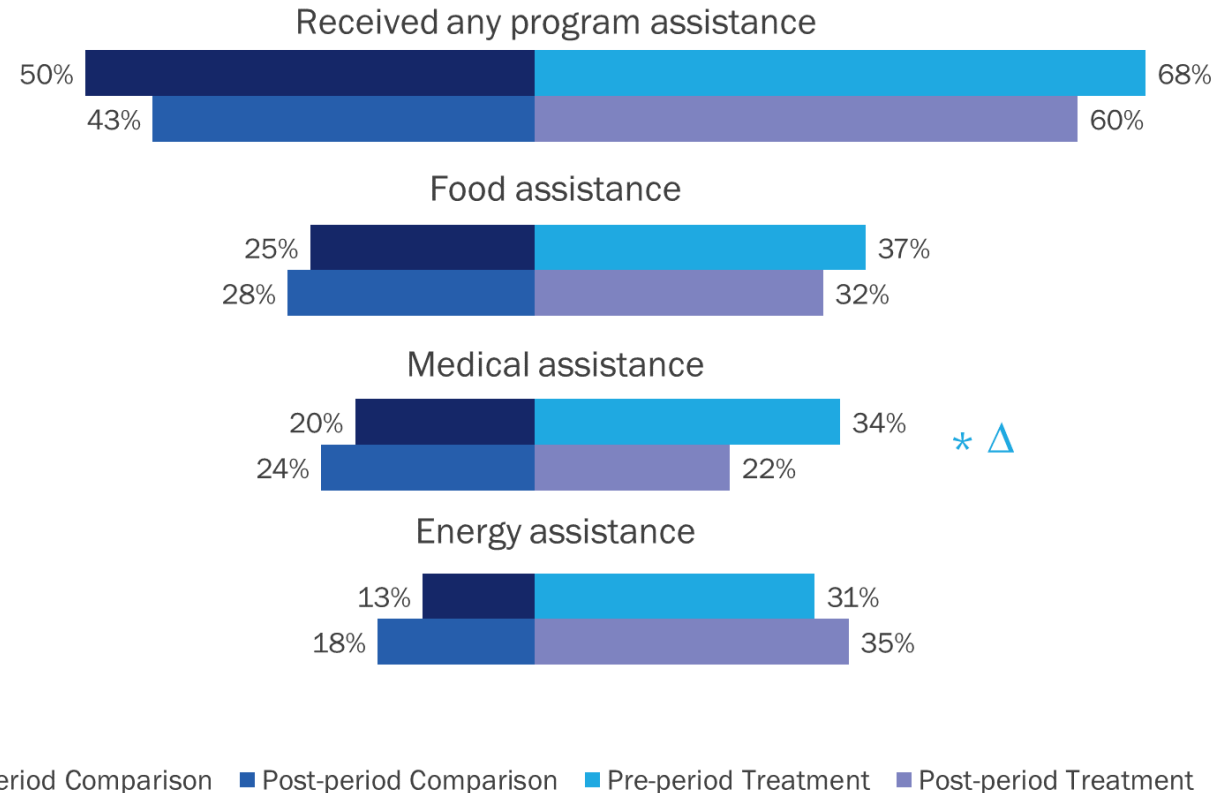
# UTILITY NEI RESEARCH

- Scoped utility NEI evaluation study early in 2018-2021 cycle based on discussions with SAG, other evaluators, and AIC
- Discontinued work toward evaluation in 2020 after it became clear that obtaining the necessary data for the study would be extremely time consuming
- Have continued to study program effects on arrearages and bill reductions through other avenues (e.g. recent [Arrearage Reduction Pilot report](#))



# IQ PARTICIPANT NEI RESEARCH

- Study design and methods developed in coordination with other Illinois evaluators and with SAG
- [Initial screening exercise conducted in 2019-2020](#) further refined areas of focus
- Study found a monetizable, statistically significant decrease in the use of medical assistance programs after participating in IQ Initiative
- Monetized impacts of this change and incorporated them into benefit-cost testing
- Other effects were either not statistically significant or could not be monetized with our chosen methods
- Further details and results available in study report: [Ameren Illinois Income Qualified Participant Non-Energy Impacts Assessment](#)



# AIC NONRESIDENTIAL NEIs CASE STUDY RESULTS



## MANUFACTURING/ INDUSTRIAL



### LED LIGHTING

Customers said upgrading to LEDs increased overall lighting quality and brightness, resulting in improved facility safety, product quality, and worker happiness, as well as decreased administration, waste disposal, and maintenance costs associated with replacing burned-out bulbs.

### OPERATIONS AND MAINTENANCE

- Participants commonly reported decreased administration costs associated with ordering new bulbs and changing out old ones. Cost savings ranged between \$200 and \$2,145 annually.
- One process manufacturer said they went from a dozen bulb replacements per week in office settings to none.

### WORKSPACE COMFORT

- Participants frequently noted increased positivity in the workspace and said the LED lighting was brighter and more natural. One participant said they originally completed the project primarily for the energy savings, but the improvements in worker attitudes and feeling in the space were the most valuable changes.

*"Workers feel like the owner is investing in their space."*

### VISIBILITY

- An industrial pipe manufacturer said they catch 15%-20% more product defects, potentially saving thousands of dollars in sales and product replacement since upgrading to LEDs. They also said increased exterior lighting quality and visibility resulted in a 10% reduction in product damages in the yard.
- A truck body manufacturer shared employees can see better to weld, resulting in fewer errors and saved worker time.

*"Good lighting means you can see. So, if you want to assess quality, you now can assess the quality of easily."*

### REDUCED DOWNTIME

- A truck body manufacturer's annual facility downtime cost meant they had to wait for it causing a halt in production
- A construction aggregate project 30 minutes of warm-up that approximately \$3,400 in an

### SAFETY

- Participants said the lighting due to increased brightness

*"By eliminating the glass lenses in themselves, I've improved the plant and a personnel safety standpoint the cut glass or anything like that"*



### COMPRESSED AIR

#### OPERATIONS AND MAINTENANCE

- A truck body manufacturer associated with ordering replacement parts \$1,200 per year.

*"The longevity of the machines [is] between the three instead of having two at a time and save on another"*

### OPERATIONS AND MAINTENANCE COST SAVINGS

Measure	Average Incentive Amount	Value of Average Annual Energy Savings	Value of Average O&M Imp
LED Fixture	\$30	\$32	\$12
Efficient Air Compressor	\$3,125	\$2,463	\$460
VFD on 20 HP Chilled Water Pump	\$2,447	\$475	\$157
VFD on 15 HP HVAC Supply/Return Fan	\$1,875	\$2,344	\$10
VFD on 25 HP HVAC Supply/Return Fan	\$3,125	\$13,671	\$85
VFD on 40 HP HVAC Process Fan	\$5,000	\$6,119	\$382
VFD on 40 HP HVAC Process Pump	\$5,000	\$3,888	\$282

\*Includes value of incentive, energy savings, and O&M non-energy impacts (NEIs)

# NONRESIDENTIAL NEI RESEARCH

- Exploratory research to identify, characterize, and monetize the NEIs associated with select measures and customer segments relevant to the AIC Business Program
- Research activities included lifecycle cost engineering analysis for O&M NEIs and in-depth interviews with participants for non-O&M NEIs
- Results were produced in case study format to support AIC Business Program marketing/targeting: AIC Nonresidential NEIs Case Study Results

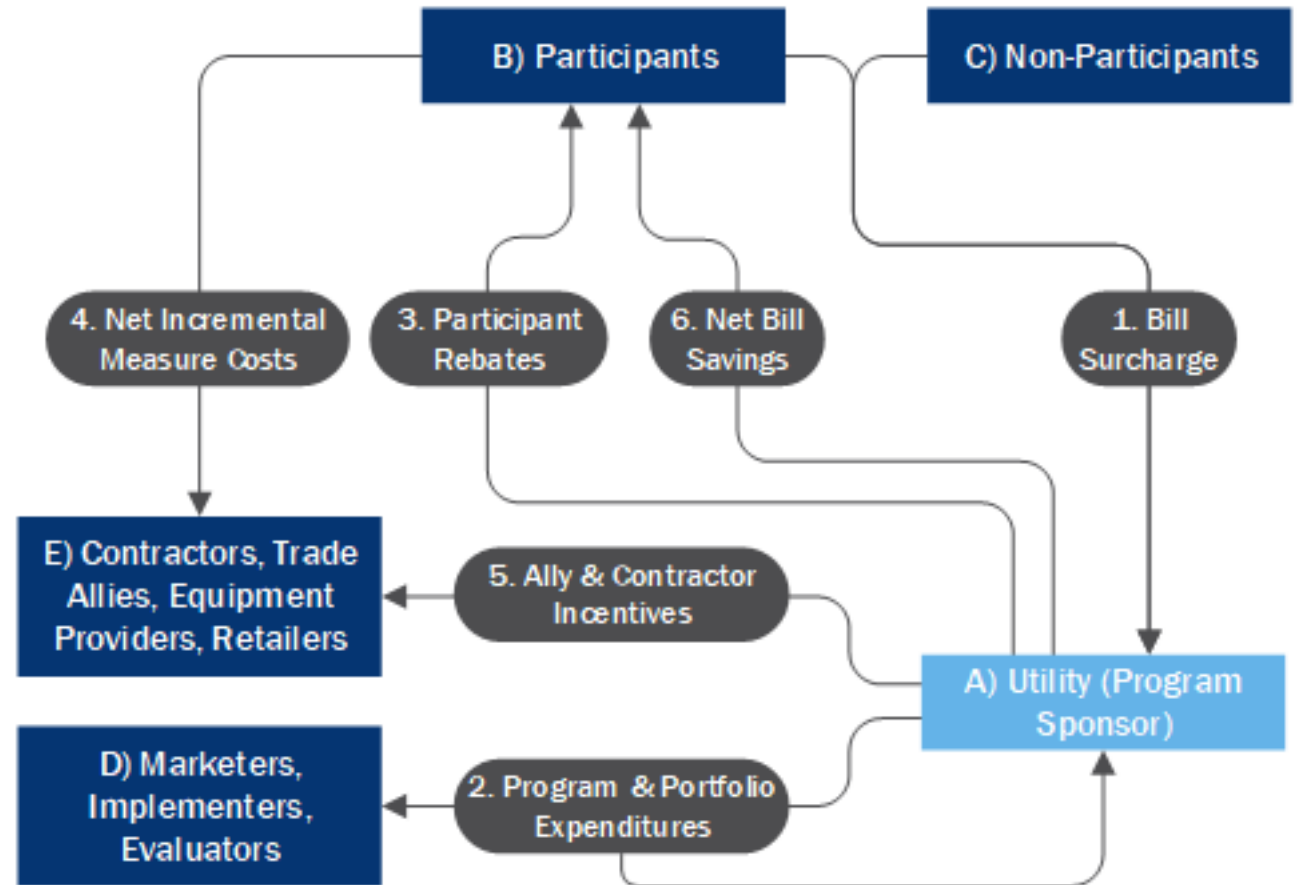
# SOCIETAL NEI RESEARCH

- Analysis of reduction of air pollution emissions linked to AIC EE portfolio and resulting health benefits
- Uses US EPA AVERT & COBRA tools to develop avoided cost schedules
- Uses NREL Cambium to model future grid changes and emissions rates
- [First analysis conducted using 2018 program data and completed in 2021](#)
- [Updated analysis using 2023 program data completed in 2024](#)
- Impacts realized in Illinois are incorporated into benefit-cost testing and are a significant contributor to portfolio benefits overall

Savings Year	Electric (\$/kWh)	Res Propane (\$/therm)	Res Gas (\$/therm)	Nonres Gas (\$/therm)
2023	0.0090	0.2217	0.1708	0.1723
2024	0.0090	0.2217	0.1708	0.1723
2025	0.0090	0.2217	0.1708	0.1723
2026	0.0090	0.2217	0.1708	0.1723
2027	0.0090	0.2217	0.1708	0.1723
2028	0.0102	0.2540	0.1951	0.1967
2029	0.0101	0.2540	0.1951	0.1967
2030	0.0097	0.2540	0.1951	0.1967
2031	0.0092	0.2540	0.1951	0.1967
2032	0.0088	0.2540	0.1951	0.1967
2033	0.0084	0.2540	0.1951	0.1967
Etc.	...	...	...	...

# MACROECONOMIC & JOB IMPACT RESEARCH

- Completed annually in alignment with Policy Manual Section 6.7, capturing direct, indirect, and induced effects
- Uses IMPLAN input-output analysis software to build a multiplier set that can be used for quick-turnaround annual reporting
- Model updated once per cycle, multiplier approach used to estimate annual impacts for evaluation report
- Results provided by April 30 of each year for the prior year and included in annual portfolio Integrated Impact Evaluation Report



# FUTURE RESEARCH PLANS

---

- **Participant NEIs:** No current plans for additional research
- **Societal NEIs:** Impacts will be reported annually using existing avoided cost schedule; we expect to update models at some point in 2026-2029 cycle but have not yet determined in what year this update will occur
- **Utility NEIs:** No current plans for additional research
- **Macroeconomic & Job Impacts:** Impacts will be reported annually using multipliers; we expect to update models in the 2026 year

**We are currently in the process of evaluation planning for the 2026-2029 cycle and welcome any comments from SAG on future areas for NEI research or around the value of NEI research**



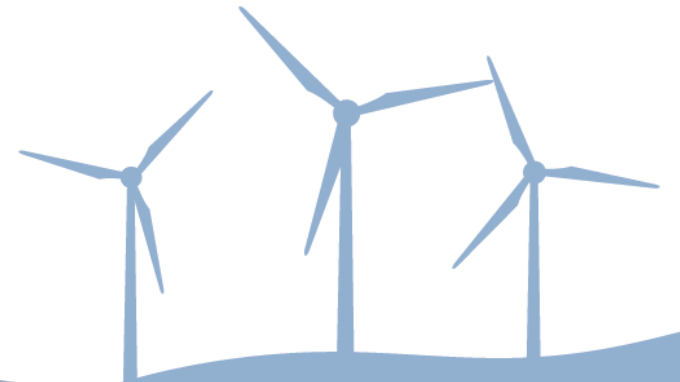
**Opinion Dynamics**  
an E Source Company

**Zach Ross**

**Senior Director**

**(617) 301-4663**

**[zross@opiniondynamics.com](mailto:zross@opiniondynamics.com)**



©2025 Opinion Dynamics, an E Source Company.  
All Rights Reserved.

All product or company names that may be mentioned in this publication are tradenames, trademarks, or registered trademarks of their respective owners.